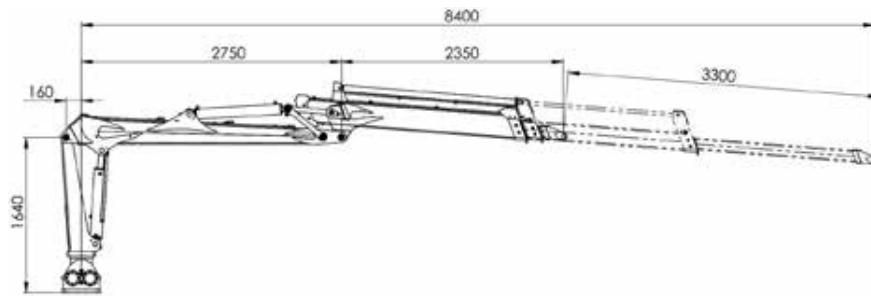


Crane

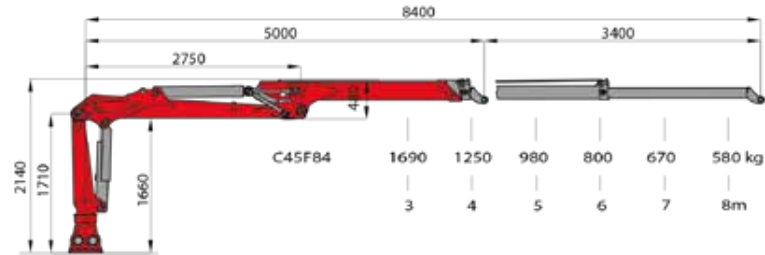
<i>Specifications</i>	BMF	PALFINGER				
	840	C45F84	C60F86	M70F101	S100F101	S110F101
Max. lifting moment Brutto:	76 kNm	71 kNm	82 kNm	102 kNm	128 kNm	143 kNm
Max. torque:	8,4 m	8,4 m	8,6 m	10,1 m	10,1 m	10,1 m
Max. lifting power at 4 m:	1.390 kg	1.250 kg	1.510 kg	1.610 kg	2.140 kg	2.490 kg
Max. lifting power at 6 m:	850 kg	800 kg	980 kg	1.070 kg	1.420 kg	1.640 kg
Max. lifting power at 8 m:	500 kg	580 kg	720 kg	760 kg	1.030 kg	1.190 kg
Max. lifting power at 10 m:	-	-	-	540 kg	770 kg	900 kg
Max. swivel torque Brutto:	20,5 kNm	18 kNm	25 kNm	31 kNm	40 kNm	44 kNm
Swivel range:	370°	340°	425°	385°	385°	385°
Weight: (without hinge / rotator)	1.100 kg	1.100 kg	1.170 kg	1.730 kg	1.890 kg	1.920 kg
Working pressure:	200 bar	170 bar	200 bar	215 bar	215 bar	240 bar
Pump flow rate: (LS)	80 l/min	100 l/min	100 l/min	130 l/min	150 l/min	150 l/min
HM 8 - 400 KFL	•	•	-	-	-	-
HM 8 - 500 KFL	•	•	-	-	-	-
HM 10 - 500 KTL	-	-	•	•	•	-
HM 14 - 800 KTL	-	-	•	•	•	-
HM 14 - 860 KTL	-	-	•	•	•	-
HM 14 - 860 KL	-	-	-	-	-	•



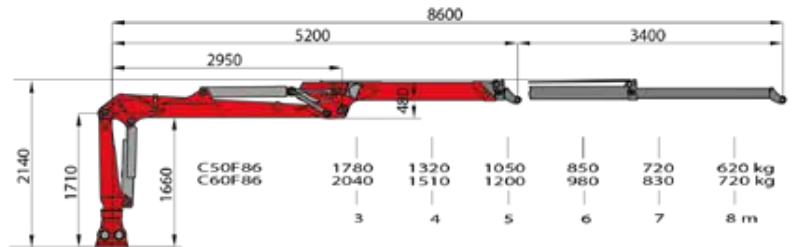
**BMF
840**



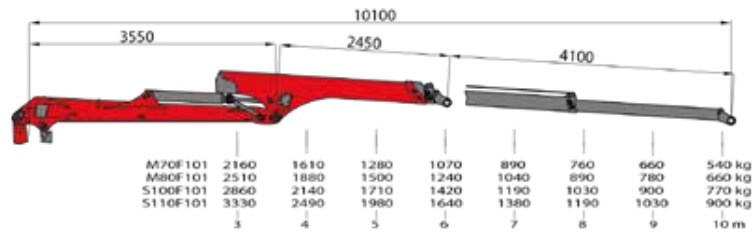
C45F84



C60F86



**M70F101
S100/110F101**



Technische Spezifikationen:

HG 1000

HG 1250

Super Grip II 260R

Manufacturer:

Heizomat

Heizomat

Hultdins

Max. load

2.000 kg

3.000 kg

3.000 kg

Working pressure:

200 bar

200 bar

250 bar

Max. opening width:

1.021 mm

1.321 mm

1.547 mm

Min. gripping diameter:

110 mm

86 mm

110 mm

Max. grasp surface:

0,15 m²

0,20 m²

0,26 m²

Total weight::

110 kg

160 kg

230 kg