

Splitta 400

Fully Automatic High Production Logs and Kindling Machine

Technical Specifications

Overall Dimensions:

> See below

Overall Weight:

> 1900 kg

Power Supplies:

- > 415v 3 Phase 63 amp socket
- > 30 kW (incl. power for Splitting Machine)
- > PTO drive option

Timber Input:

- > Diameter 40 cm (16") maximum
13 cm (5") minimum

Timber Output:

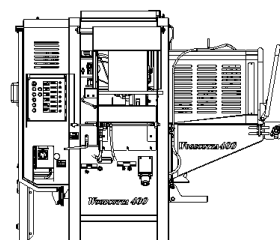
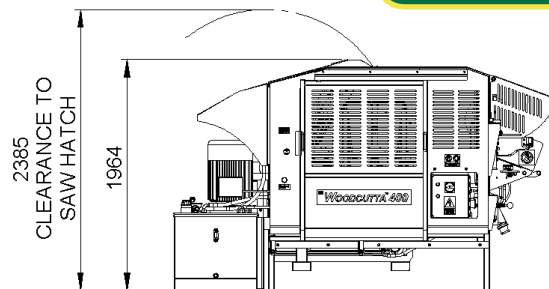
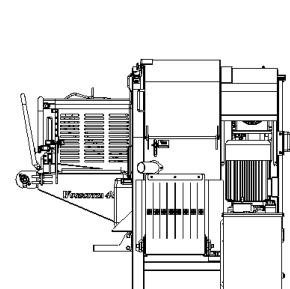
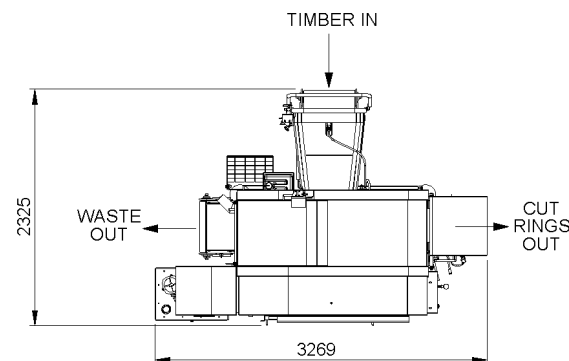
- > Cut Lengths - adjustable 15 cm (6") to 33 cm (13")
- > Theoretical output - see panel

Cutting:

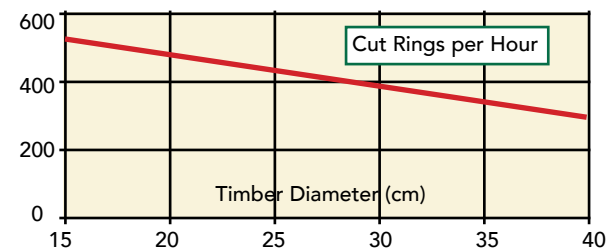
- > Hydraulic chainsaw with .404" Chain and Harvester Bar
- > Dedicated lubrication system

Handling:

- > Automatic operation
- > Separate Feed & Waste Conveyors
- > Cut ring transferred by hydraulic arm



Machine Output



The graph above shows the theoretical output of Woodcutta running continuously.

The table below shows the theoretical output of Fuelwood Factory (Woodcutta and Splitta) running continuously based on a ratio of 1.8 loose product to solid timber. The following factors should be taken into account when assessing achievable outputs -

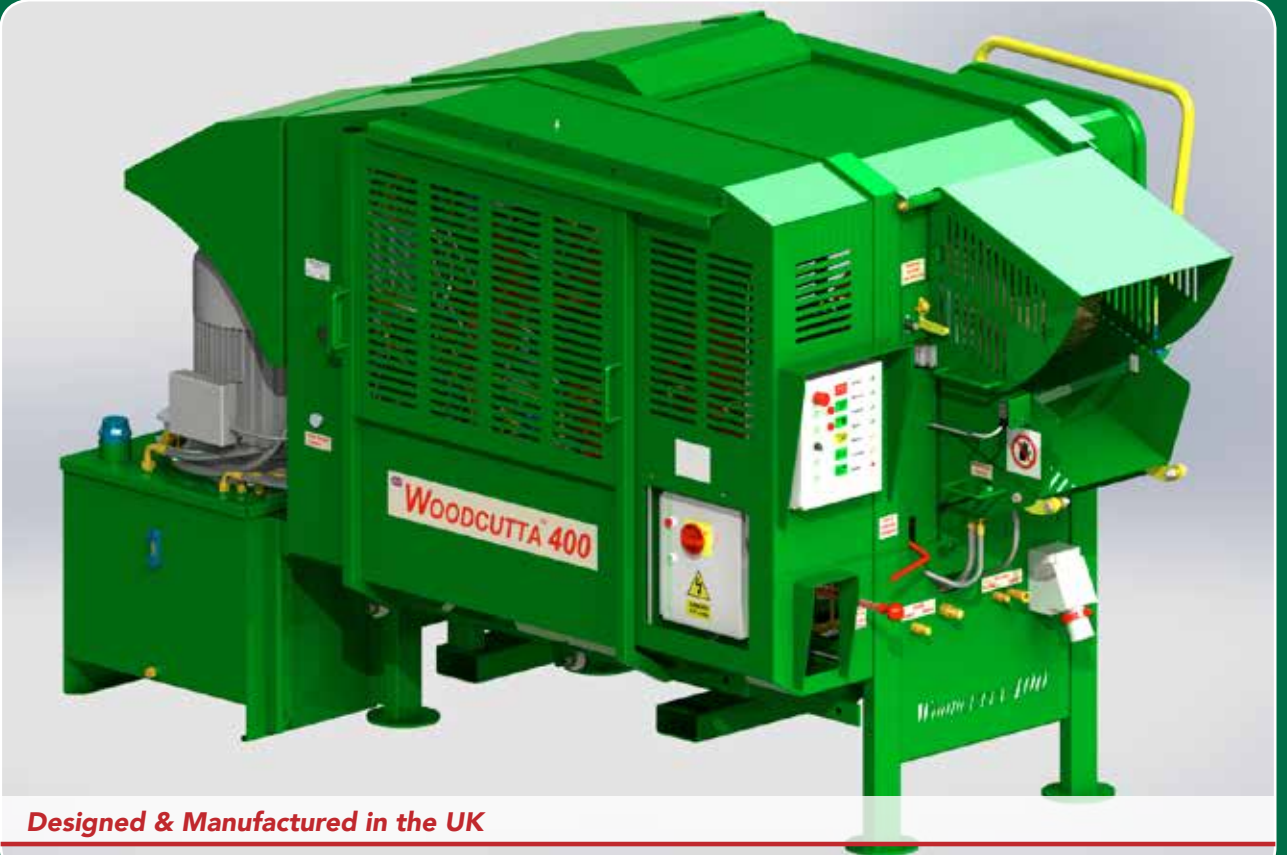
- > The diameter of the timber being processed
- > The ability of the bagging operator(s) to keep up with the machine when doing nets
- > The length of time that the machine is run in a shift

Timber Size	Diameter (cm)	Length (cm)	Solid m3 per hour	Bulk Bags per hour
Maximum	40	33	12.4	22
Average	30	25	6.8	12
Minimum	15	20	1.7	3

For further information, please contact
Fuelwood (Warwick) Ltd.,
Claywood, Beausale,
Warwick, CV35 7NX.
Tel: 01926 484673
www.fuelwood.co.uk
sales@fuelwood.co.uk

Woodcutta 400™

Cost Effective Automatic Cutting



Designed & Manufactured in the UK

Woodcutta is a fully automated cross-cutting machine that can be linked to a variety of splitting machines to provide a complete line-up for converting timber lengths into split logs or kindling.

Woodcutta converts the timber into cut rings using a hydraulic chainsaw and can then pass these rings to either Splitta 360, Splitta 400 or Kindlet Pro. The rings can cut to any length between 15 cm and 33 cm to suit the length requirement of the final product.

Woodcutta was first introduced onto the market in the year 2003 and thus has had a significant time in the field to demonstrate its effectiveness and reliability. This latest development of Woodcutta has been aimed at simplification where possible, without compromising function and performance. It incorporates some significant improvements such as -

Key Features:

- > Reduced footprint to ease installation
- > Better access for maintenance and operation
- > Reduced maintenance and increased life
- > Centralised Operator control
- > Simple visual feed back of automatic operation
- > Simplification of coupling with Splitting machines
- > PTO drive option
- > New sawdust extraction

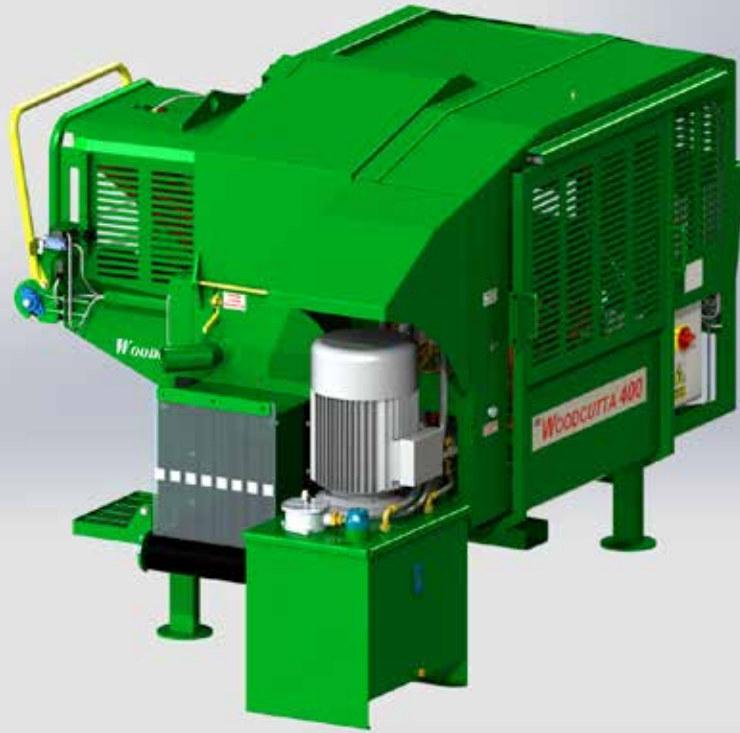


T +44 (0)1926 484673 E sales@fuelwood.co.uk @FuelwoodWarwick
Visit our website www.fuelwood.co.uk



Fuelwood Factory

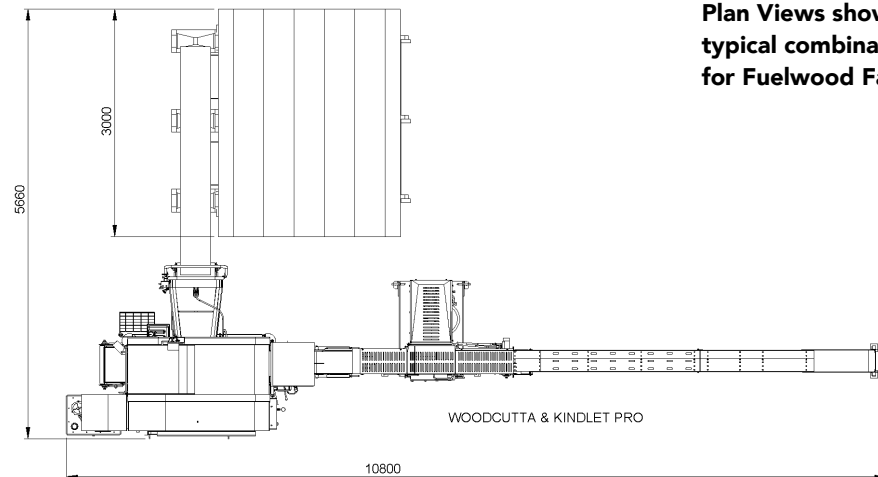
Cost Effective Automatic Cutting



Fuelwood Factory is a term used to describe a combination of Woodcutta and a compatible Splitting Machine (Splitta 400, Splitta 360, Kindlet Pro) together with other optional equipment to suit the individual Customer needs.

This combination provides an automated processing line to convert Timber from the round into split produce (logs or kindling).

Optional equipment is available to enhance the productivity of this processing line and is outlined below.



Plan Views showing typical combinations for Fuelwood Factory

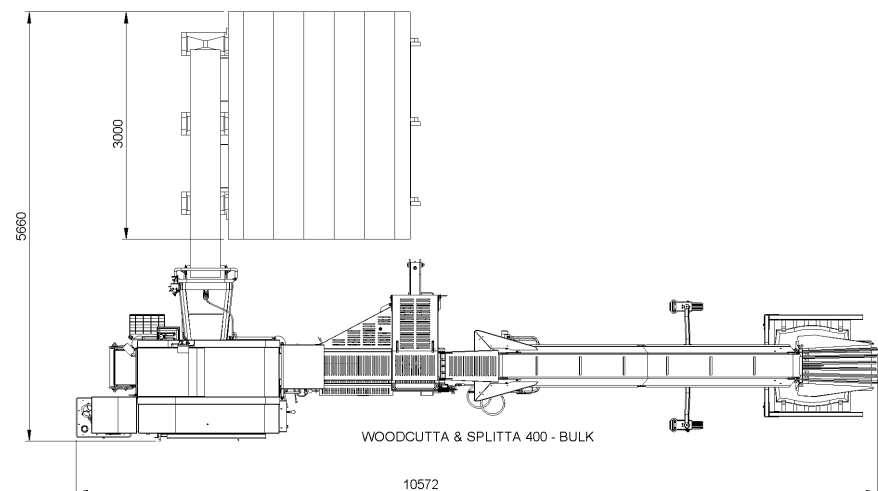
ELEVATOR

- > 4.5 metres long
- > Hydraulic elevation
- > Hydraulic Drive



CLEANA

- > Removes slivers and debris
- > Waste into standard bulk bags
- > Adjustable angle



MANUAL BAGGA

- > Suitable for logs and kindling
- > Adjustable for different lengths of produce
- > Links to Splitta 400, Splitta 360 and Kindlet Pro
- > Adjustable height



TIMBER DECK

- > Large capacity
- > Three chain drive
- > Timber up to 4 metre length
- > Adjustable height