



MOHEDA

For tough challenges in the forest.







Built for tough challenges in the forest

Moheda's Swedish-made forest trailers are built for hard work in the forest. The Nordic seasons make special demands on function and ergonomics. Moheda's designers have put a lot of effort into making their products safe and durable. Moheda is for professionals. The trailers can stand up to tough challenges and heavy loads and the powerful long-reach cranes make forest work efficient and profitable. Our hydraulically driven trailers are considered by foresters to be among the absolute best and they have a high second-hand value. A good sign if ever there was one.

Improved efficiency = better economy

The latest generation of cranes and trailers from Moheda have improved ergonomics and more advanced technology. They are developed and built in Sweden to cope with the demanding Nordic weather conditions. The village forge was set up back in 1835 just outside Moheda. This forge became the foundation of the company, which has built trailers for over 60 years. Horse-drawn trailers have been built since the 40's. The first Moheda trailer with a square central beam was built in the 50's. Then, as now, there were high demands on quality and functionality. Improved efficiency in the forest, without compromising safety, provides time savings and economic benefits.



Moheda M151 - Quality thinking right down to the last detail.



1. Robust design for tough driving.

All M-line trailers, with or without hydraulic drive, are known for their powerful, easy-climbing bogies. Hubs/axle spindles are dimensioned for the specific wheel. Large wheels require a powerful hub. Reinforced rims with steel rings in the rim channel (specially for forestry and standard on all trailers with drive) is also a feature highly valued by our quality-conscious customers. The large load space and a very sturdy safety gate protect the driver. It is also possible to fit different pump systems to optimize the flows for crane and trailer operation.

2. Moheda 4-wheel driven trailers will get you through where others stall.

Moheda has built hydraulically driven trailers since 1983 and the roller-driving on all 4 wheels is much appreciated. Engaging and disengaging the drive is simple, using an electrically controlled valve, operated by a joystick in the tractor. Another advantage of roller-drive is that when the drive is disengaged the trailer becomes a "standard" towed trailer. Nothing which requires power or hub drive which needs to be uncovered. Disc or drum brakes can be fitted on all the wheels. Option: electrically operated trailer steering when the operated trailer is driven from the tractor's pump system - trailer control is then prioritised over drive control.

3. Moheda cranes come in 9 models.

The cranes now have reaches ranging from 5.1 meters to a full 8.75 meters. The M-series has a so-called inclined lifting arm which provides greater lifting power at long reach. There are telescopic/double-telescopic arms on all models (except K20/30) for extra long reach. The overhead air cylinders provide good lifting power at approx. 4 metres when the lifting occurs up onto the trailer. The protected location also makes it impossible for damage to be caused by a swinging load in the grab. A rotator link with brake, for less movement in the load, comes as standard with the M-series.

There is a Moheda forest trailer for every forester

Moheda trailers have been on the market for over 50 years. On the domestic Scandinavian market, Moheda is the leading brand within the field of powered forest trailers above all. Traditionally, we have manufactured forest trailers for those whose place of work is more or less the forests. Moheda is designed for tough days, professionals depend on equipment which lasts and functions rain or shine. These characteristics can now be found in our smaller models as well, which are ideal for those who work in the forest less frequently. That's why there is a Moheda forest trailer for every forester.



1



2



3

1. Hydraulic supports increase the load capacity by more than 50% when transporting brushwood.
2. With a Moheda crane you can reach anywhere on the trailer. Note the completely withdrawn support leg on the gate.
3. The M121 is built for dealing with heavy loads of timber.



1



2



3



4



5

1. The Moheda 101 - our popular and sturdy 10-tonne trailer. A design which provides excellent ground clearance and a well-utilised load area.

2. The M91 frame steering cylinder is protected from underneath. From the M101 and upwards all models are equipped with double built-in frame steering cylinders. The cylinders for the hydraulic support legs are mounted on the inside for maximum protection.

3. The centre of the hub is located above the bogie's bearing - giving an "easy climbing" bogie.

4. Well-protected, collected hoses for cranes that work in the forest. Well-thought-out design for minimal maintenance.

5. Link with pending brake for controlled pivoting (standard on all M-cranes).



Trailers See also the technical specifications on the following pages

M71

The M71 with a 7-tonne load capacity and 11.5/80x15.3 wheels is a trailer for those starting to work in their own forests. With the K20 crane, the trailer is suitable for the transportation of wood, pulpwood and smaller timber. It is equipped with a central beam frame, a stable crane pallet and gate and a sturdy bogie. The trailer is also equipped with frame steering, telescopic support legs with built-in well-protected cylinders and moveable stakes. The brakes are an optional extra on all Moheda's trailers.

M91

The M91 has a load capacity of 9 tonnes, with 400/60x15.5 wheels as standard, frame steering and support legs with built-in, well-protected cylinders. Perfect for all foresters that need a powerful, well-equipped basic trailer for hauling timber. The trailer is equipped with a central beam frame, sturdy bogie and moveable stakes. Suitable crane models are the K30 and K35.

M101

The M101 has a load capacity of 10 tonnes. A sturdy trailer with three pairs of moveable stakes and protected frame steering with double cylinders for optimal performance and stability. The trailer can manage most types of forest transports. Suitable crane models are the K45 and M40. The rear light is standard.

M121

The M121 is the most popular Moheda trailer with a load capacity of 12 tonnes. Equipped as standard with 15/70x18 wheels and rear light. Protected frame steering with double cylinders for optimal performance and stability. Can be equipped with brakes for increased safety, winch and hydraulic support legs.

M141

The M141 is our biggest trailer model without drive. 500/60x22.5 tyres with reinforced rims, brakes and rear light for safety both in the forest and on the road all come as standard. The load capacity is 15 tonnes. Winch and sturdy folding support legs are optional.

M101-4WD

The M101-4WD is Moheda's smallest trailer with drive, well-dimensioned and powerful. Equipped as standard with 400/55x22.5 tyres with reinforced rims and built-in rear light. The load capacity is 10 tonnes. Protected frame steering with double cylinders for optimal performance and stability. Can be equipped with brakes for safety in terrain and on the road. Optional extras include telescopic support legs and winch.

M121-4WD

The M121-4WD is the most popular drive trailer model. Sturdily built but at the same time with smooth handling characteristics. Operation with own hydraulic system as an optional extra. 500/45x22.5 wheels with reinforced rims and rear light as standard. The load capacity is 12 tonnes. Protected frame steering with double cylinders for optimal performance and stability. Brakes for the safety of yourself and others, winch and telescopic support legs are optional extras.

M141-4WD

The M141-4WD with its own hydraulic system (optional extra) and 500/60x22.5 tyres with reinforced rims and disc brakes on 2 wheels, and rear light for safety both in the forest and on the road. The load capacity is 15 tonnes. Winch and powerful folding support legs are examples of optional extras. The choice of optional extras is a wide one, which means the trailer can be equipped according to the customer's needs.

M151-4WD

The M151-4WD is Moheda's biggest trailer aimed at forest owners, professional foresters and contractors. A powerful trailer built for tough days in the forest. With the M75 crane this trailer can be compared to a smaller forwarder. Load capacity 15 tonnes. 600/50x22.5 wheels with reinforced rims, disc brakes on two wheels and rear light as standard. Load sensing hydraulic system optional. Folding support legs and 4-wheel brakes are optional.

Technical specifications for trailers

TRAILERS	M71	M91	M101	M121	M141
Load area, m ²	1.65	2.0	2.3	2.7	3.3
Load capacity, kg	7000	9000	10000	12000	15000
Weight, kg	1050	1115	1395	1860	2900
Central beam, ∅ dim mm	140x140x6	160x160x8	160x160x8	180x180x8	220x220x10
Axles, ∅ dim mm	60	braked 60 unbraked 70	braked 60 unbraked 70	80	90
STANDARD EQUIPMENT					
Frame steering	yes	yes	yes	yes	yes
Built-in rear light	-	-	yes	yes	yes
Hydr support legs	yes	yes	optional	optional	optional
Stakes, (2 per bunk)	4	4	6	6	6
Tyre dim	11.5/80x15.3	400/60x15.5	400/60x15.5	15/70x18	500/60x22.5
OPTIONAL EQUIPMENT					
Tool box	yes	yes	yes	yes	yes
Extra bunk with 2 stakes	yes	yes	yes	yes	yes
Dividing stakes	-	-	-	yes	yes
Magnet rear light (set)	yes	yes	-	-	-
Built-in rear light	-	yes	yes	yes	yes
Brakes	drum	drum/disc	drum/disc	drum/disc	standard
Winch, trailer-mounted	yes	yes	yes	yes	yes
Winch. manual/radio-controlled	yes	yes	yes	yes	yes
Alt tyre dim	400/60x15.5	400/60x15.5 Traction/ Reinforced rims	15/70x18 Reinforced rim	500/45x22.5	600/50x22.5
TRAILERS – WITH DRIVE					
	M101/4WD	M121/4WD	M141/4WD	M151/4WD	
Load area, m ²	2.3	2.7	3.3	3.3	
Load capacity, kg	10000	12000	15000	15000	
Weight, kg	2080	2310	3300	3500	
Central beam, ∅ dim mm	160x160x8	180x180x8	250x250x10	250x250x10	
Axles, ∅ dim mm	70	80	90	90	
STANDARD EQUIPMENT					
Frame steering	yes	yes	yes	yes	
Stakes, (2 per bunk)	6	6	6	6	
Tyre dim	400/55x22.5	500/45x22.5	500/60x22.5	600/50x22.5	
Reinforced rim	yes	yes	yes	yes	
Disc brakes	optional	optional	standard	standard	
Built-in rear light	yes	yes	yes	yes	
OPTIONAL EQUIPMENT					
Hydr support legs	yes	yes	yes, folding support legs	yes, folding support legs	
Extra bunk with 2 stakes	yes	yes	yes	yes	
Dividing stakes	-	yes	standard	standard	
Winch, trailer-mounted	yes	yes	yes	yes	
Winch. manual/radio-controlled	yes	yes	yes	yes	
Alt tyre dim	-	-	600/50x22.5	700/40/22.5	
LS pump	-	yes	yes	yes	

Optional extras

All Moheda trailers can be equipped with optional extras such as a trailer-mounted winch, multiple bars, disc/drum brakes, lighting equipment and alternative tyre dimensions/patterns (certain trailers).

Cranes

See also the technical specifications on the following pages

K20

The K20 is the smallest crane in the K-series. It has a reach of 5.1 metres, a single slew motor and an overhead, well-protected hub cylinder. Designed for the M71 trailer. Lift torque 20 kNm. Equipped as standard with multi-lever valve, G160L grapple and GR30 rotator.

K30

The K30 has a reach of 5.5 metres and the design of larger K-series cranes with a link system and overhead cylinder. Designed for the M91 trailers. Lift torque 25 kNm. Equipped as standard with multi-lever valve, G160L grapple and GR30 rotator.

K35

The K35 is the crane for those who need extra long reach. Equipped with telescopic boom with a full reach of 6.2 m. Link system and overhead hub cylinder like the K30. Designed for the M91 and M101 trailers. Lift torque 25 kNm. Equipped as standard with multi-lever valve, G160L grapple and GR30 rotator.

K45

The K45 is the biggest crane in the K-series. Reach of 6.2 metres, designed using the experiences gained from Moheda's cranes. Lift torque 36 kNm. Equipped as standard with multi-lever valve, G260L grapple and GR30 rotator. Optional extras include an alternative hydraulic control system, EHC, PCL, remote control.

M40

The M40 crane model has a reach of 6.6 metres and like other models in the M series has an inclined lifting boom which provides an even better working geometry. Jib boom with telescope for increased reach. Specially developed link design for smoother boom movement. Well-protected cylinders and hoses. Lift torque is 43 kNm. Equipped as standard with GR30 rotator and G260L grapple. Can be equipped with a crane-mounted winch.

M50

The M50 has a reach of 6.9 meters, an inclined lifting boom and telescope. The inclined lifting boom provides an even better working geometry.

Specially designed link developed for smoother boom movement. Well-protected cylinders and hoses. Jib boom with telescope for increased reach. Lift torque is 49 kNm. Equipped as standard with GR46 rotator and G210S grab.

M60/M65

The M60 crane model has a full 7.5 meter reach thanks to Moheda's special jib which gives a longer single telescope. Like all other models in Moheda's M-crane series, the M60 has an inclined lifting boom and a newly developed modern link system. The lift torque is 54 kNm.

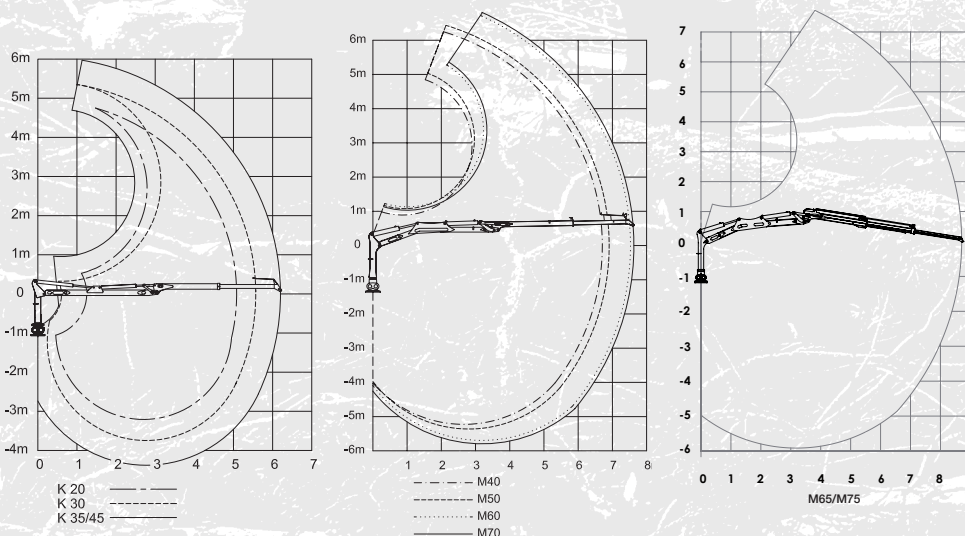
Equipped as standard with GR46-F rotator and TG25S grapple.

In many ways, the M65 is the same crane as the M60 but equipped with double telescope which provides a reach of 8.75 metres. The M65 has a lift torque of 54 kNm and is equipped as standard with a GR46-F rotator and a TG25S grapple.

M70/M75

The M70 crane achieves a full reach of 7.5 metres within a single telescope thanks to Moheda's system. The crane has a link system and inclined lifting boom. Equipped as standard with a GR603 rotator and a TG25S grapple. Lift torque is 59 kNm.

Like the M65, the M75 is equipped with double telescope and has a reach of 8.75 metres. The lift torque is 59 kNm. Equipped as standard with a GR603 rotator and a TG25S grapple.



Valve alternatives

All Moheda M series cranes are equipped with a pending brake link to the rotator and are available with different valve alternatives, everything from multi-lever to Scanreco radio/remote control, according to customer specification.

Technical specifications for cranes

CRANES	K20	K30	K35	K45
Reach, m	5.1	5.5	6.2	6.2
Telescope	-	-	yes	yes
Lift torque, kNm	20	25	25	36
Lift capacity at max reach, kg	275	345	280	400
Rec. oil flow, l/min	20-30	25-35	25-35	30-40
Working pressure, bar	170	170	170	170
Slew motor	Single	Double	Double	Double
Slew torque, kNm	5.0	8.5	8.5	8.5
Slew angle	360°	360°	360°	360°
Weight without grapple and rotator and valve, kg	490	540	570	590

STANDARD EQUIPMENT

Hydraulic valve, *HCD3M	*multi-lever	*multi-lever	*multi-lever	*multi-lever
Rotator	GR30/3 tonnes	GR30/3 tonnes	GR30/3 tonnes	GR30/3 tonnes
Grapple	G160L	G160L	G160L	G260L

OPTIONAL EQUIPMENT

Pending brake	yes	yes	yes	yes
Winch, crane-mounted	yes	yes	yes	yes
Winch, radio-controlled/manual	yes	yes	yes	yes
Work light	yes	yes	yes	yes

VALVE ALTERNATIVE

2-lever mech (HCD3M)	yes	yes	yes	yes
2-lever elec on/off (HCD3M)	yes	yes	yes	yes
PCL low-pressure servo	-	-	-	yes
EHC electric servo	-	-	-	yes

CRANES	M40	M50	M60	M65	M70	M75
Reach, m	6.6	6.9	7.5	8.75	7.5	8.75
Lift torque, br, kNm	43	49	54	54	59	59
Lift capacity max reach, kg	450	500	500	400	560	460
Slew torque, kNm	8.5	10.8	12	12	12	12
Slew angle	360°	360°	360°	360°	360°	360°
Rec. oil flow, l/min	35-50	40-60	50-70	50-70	50-70	50-70
Working pressure, bar	170	170	170	170	170	170
Weight without grapple and rotator, kg	720	740	995	1025	1000	1030

STANDARD EQUIPMENT

Hydraulic valve, *Parker	*multi-lever	*multi-lever	*multi-lever	*multi-lever	*multi-lever	*multi-lever
Rotator	GR30/3 tonnes	GR46/4 tonnes	GR46-F/4 tonnes	GR46-F/4 tonnes	GR603/6 tonnes	GR603/6 tonnes
Grapple	G260L	G210S	TG25S	TG25S	TG25S	TG25S
Braked link	yes	yes	yes	yes	yes	yes

OPTIONAL EQUIPMENT

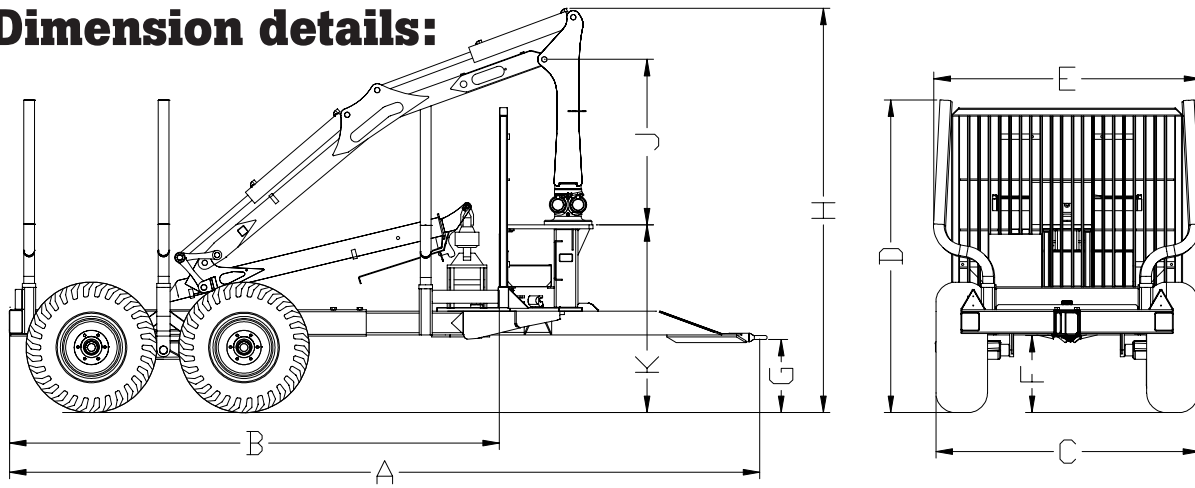
Work light, crane arm	yes	yes	yes	yes	yes	yes
Winch, crane-mounted	yes	yes	yes	yes	yes	yes
Winch, manual/radio-controlled	yes	yes	yes	yes	yes	yes
Radio control, crane (Scanreco)	yes	yes	yes	yes	yes	yes

VALVE ALTERNATIVES

2-lever mech alt elec on/off	yes	yes	yes	yes	yes	yes
PCL low-pressure servo	yes	yes	yes	yes	yes	yes
EHC electric servo	yes	yes	yes	yes	yes	yes
Radio control, valve	yes	yes	yes	yes	yes	yes

We reserve the right to make design alterations.

Dimension details:



TRAILER	CRANE	Wheel dim	A mm	B mm	C mm	D mm	E mm	F mm	G mm	H mm	J mm	K mm
M71	K20	11.5/80x15.3	5530	3840	1800	1940	1800	570	500	2680	1210	1080
M71	K20	400/60x15.5	5530	3840	1930	1940	1800	570	500	2680	1210	1080
M91	K30/35	400/60x15.5	5400	3650	2030	1970	1910	510	500	2760	1210	1150
M101	K35/45	400/60x15.5	5180-5810	3320-3950	2150	2150-2190	2100	560	500	2900	1210	1250
M101	K35/45	15/70x18	5180-5810	3320-3950	2130	2180-2270	2100	620	500	2910	1210	1260
M101	M40	400/60x15.5	5180-5810	3320-3950	2150	2150-2190	2100	560	500	2950	1260	1250
M101	M40	15/70x18	5180-5810	3320-3950	2130	2180-2270	2100	620	500	2960	1260	1260
101/4WD	K45	400/55x22.5	4945-5575	3080-3710	2190	2210-2350	2100	690	500	2880	1210	1280
101/4WD	M40	400/55x22.5	4945-5575	3080-3710	2190	2210-2350	2100	690	500	2930	1260	1280
121	M40	15/70x18	5220-5885	3355-4020	2180	2370-2505	2200	660	500	2940	1260	1280
121	M40	500/50x17	5220-5885	3355-4020	2300	2340-2475	2200	650	500	2940	1260	1280
121	M50	500/45x22.5	5220-5885	3355-4020	2300	2350-2500	2200	675	500	2960	1280	1285
121/4WD	M40	500/45x22.5	5190-5855	3325-3990	2300	2380-2500	2200	690	500	2930	1260	1300
121/4WD	M50	500/45x22.5	5190-5855	3325-3990	2300	2380-2500	2200	690	500	2950	1280	1300
141/4WD	M50	500/60/22,5	5970-6450	3900-4380	2370	2850	2380	540	500	3300	1380	1500
141/4WD	M60-75	600/60/22,5	5970-6450	3900-4380	2500	2850	2380	540	500	3300	1380	1500
151/4WD	M60-75	700/40/22,5	5970-6450	3900-4380	2580	2850	2380	540	500	3300	1380	1500

The right crane for the right trailer

Trailer / Crane	K20	K30	K35	K45	M40	M50	M60	M65	M70	M75
M71	•									
M91		•	•							
M101			•	•	•					
M101/4WD				•	•					
M121					•	•				
M121/4WD					•	•				
M141/4WD						•	•	•		
M151/4WD							•	•	•	•



MOHEDA – quality, operational safety and flexibility in the forest

Moheda is manufactured and marketed by FTG Cranes AB. Years of experience and knowledge together with genuine quality awareness at each stage behind each of our products. Quality for both the smaller forest owner and the professional forester and contractor. FTG Cranes AB is part of Forest Technology Group AB and is one of Europe's leading manufacturers of forest trailers and forest, timber and special cranes. Manufacturing is located in Bäckefors and Vänersborg. Forest Technology Group AB is part of the JCE Group – a group of companies with strong interests in forestry and bioenergy amongst other things.



FTG Cranes AB

Industrigatan 1, SE-668 40 Bäckefors, Sweden

Phone: +46 (0)521 26 26 30 | Fax: +46 (0)521 26 26 39

E-mail: info@ftgforest.com | www.ftgforest.com