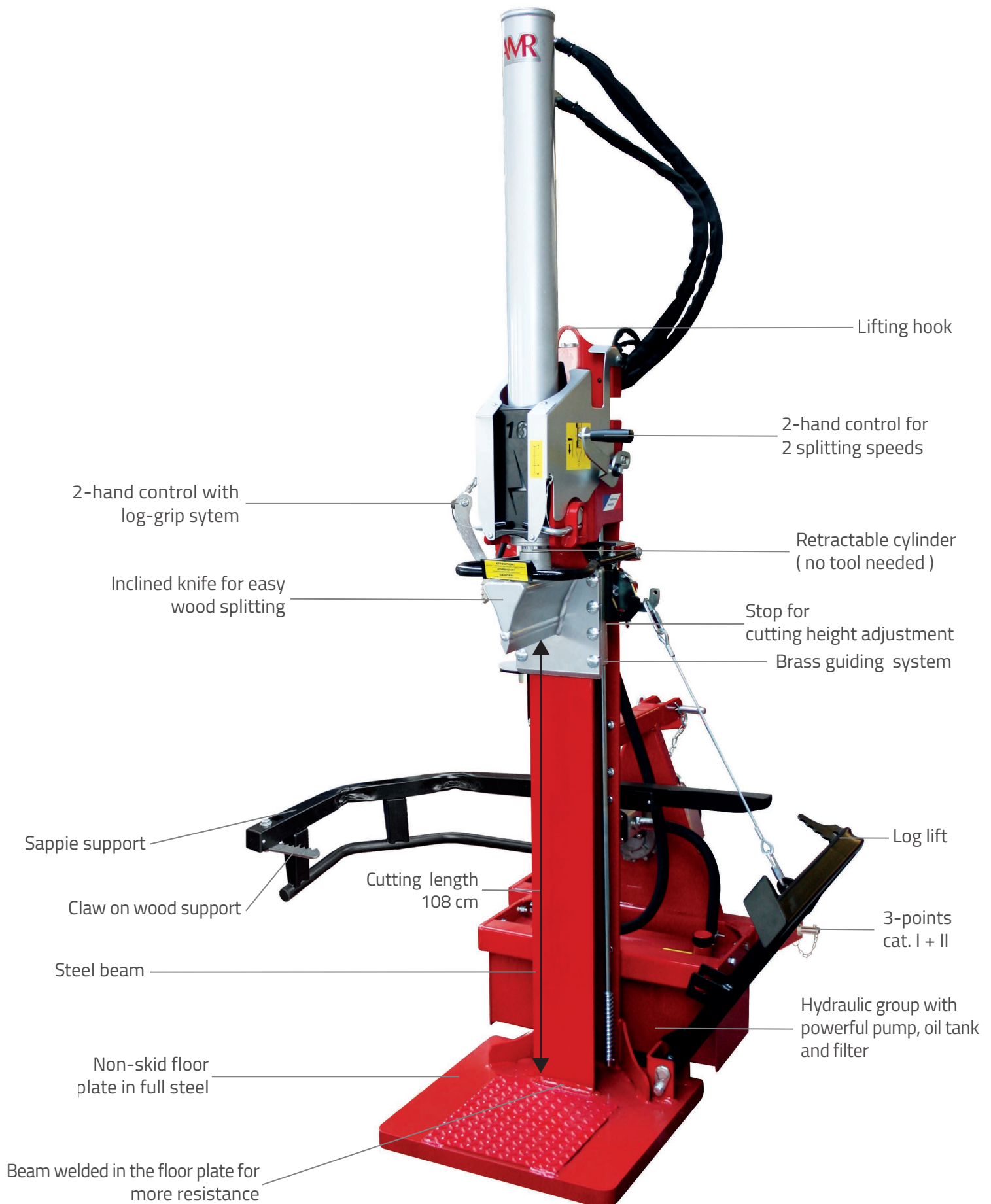


Vertical splitter 12/16 tons - V12/16 series

SPLITTING RANGE



See accessories page 20 / 21

Options and accessories can be installed in our factory or afterwards by the customers

■ Safety

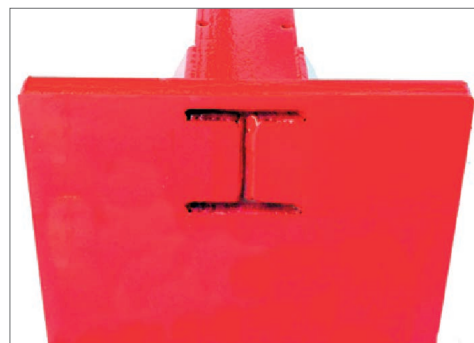
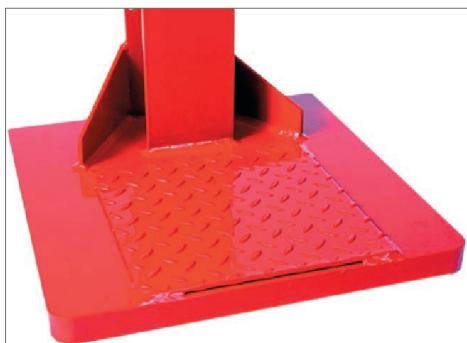
The 2-hand control allows to split logs safely. Left hand is for holding the wood and right hand activates the first then the second speed.



Ergonomic knife with special design for splitting with less effort. Tilt forward to hold the log



Sappie support for more comfort



For robustness the steel beam is set into the floor plate and welded on both sides

Vertical splitter 12 tons - V12 series

SPLITTING RANGE

■ V12 series

The V12 series splitters are full of reliability and performance. They have double cylinder speed, retractable cylinder, and they can have various accessories and options. Sappie support included. Mechanical log lift device



Ø 70 cm
< 100 cm >



VEL12



VPE12

Log splitter	VEL12	VHY12	VPF12	VHE12	VPE12
Splitting force (to)	12	12	12	12	12
Splitting length (cm)	108	108	108	108	108
Pump	Single	-	Single	Single	Single
Power supply	400 V / 4 kW	Tractor hydraulics	PTO tractor	Hydraulic + Elec. 400 V	PTO tractor + Elec. 400 V
Speed 1 (cm/s)	7,7		11,4	*7,7	11,4/7,7
Speed 2 (cm/s)	16,7	*	25,6	*16,7	25,6/16,7
Return speed (cm/s)	12,5		18,9	*12,5	18,9/12,5
Oil tank capacity (L)	28	*	28	28	28
Pump output (L/min)	21	*	37	*/21	37/21
Dimension (HxLxW cm)	250 (Working position) / 190 (Transport position) x 120 x 110 (68 on VHY12)				
Weight (kg)	372	281	348	362	393

* Depending from tractor output

Extra charge for 120 cm opening (cylinder 1 m)

Extra charge for female pump on VPF12

PTO shaft type 3 (CAR00001A)

See all options & accessories page 20 & 21

Vertical splitter 16 tons - V16 series

SPLITTING RANGE



■ V16 series

The V16 series splitters are designed to be robust. They have double cylinder speed, retractable cylinder, and they can have various accessories and options. Sappie support included Mechanical log lift device



Ø 80 cm
< 100 cm >



Log splitter	VEL16	VHY16	VPF16	VHE16	VPE16
Splitting force (to)	16	16	16	16	16
Splitting length (cm)	108	108	108	108	108
Pump	Double	-	Single	Double	Single/Double
Power supply	400 V / 4 kW	Tractor hydraulics	PTO tractor	Hydraulic + Elec. 400 V	PTO tractor + Elec. 400 V
Speed 1 (cm/s)	9,5		10,6	* / 9,5	10,6 / 9,5
Speed 2 (cm/s)	20,9	*	27,8	* / 20,9	27,8 / 20,9
Return speed (cm/s)	14,2		16	* / 14,2	16 / 14,2
Oil tank capacity (L)	28	*	28	28	28
Pump output (L/min)	42	*	54	* / 42	54 / 42
Dimension (HxLxW cm)	250 (Working position) / 190 (Transport position) x 120 x 110 (68 on VHY16)				
Weight (kg)	412	318	382	397	430

* Depending from tractor output

Extra charge for 120 cm opening (cylinder 1 m)

Extra charge for female pump on VPF16

PTO shaft type 3 (CAR00001A)

See all options & accessories page 20 & 21

COMPLETE YOUR LOG SPLITTER BY ADDING FUNCTIONS

Accessories - V12/16 series

The options and accessories can be installed during production process or afterwards with our kits.

If you order a log winch kit, please give us the model, serial number and if your splitter already has a hydraulic log lift.

If you order an oil cooler set, please tell us if you already have a log winch and/or a hydraulic log lift.



Hydraulic log lift



Sappie 380 / 800 mm



3 Wheels and drawbar
(2 wheels only for
VHY models)



PTO shaft type 3




Oil cooler set

Transformation kit VHY12 to VPF12*	TRA00006
Transformation kit VHY16 to VPF16*	TRA00012
Transformation kit VPF12 VPE12 SP*	TRA00004
Transformation kit VPF16 to VPE16*	TRA00009A
Split-wedge 12/16	ECL000100
Mechanical log lift V12 / V16	LBM000101
Hydraulic log lift V12 / V16	LBH000200
Wheels and handling lever 12/16 (3 wheels) Cat.2	RTM000202
Wheels and handling lever 12/16 for VHY model (2 wheels) Cat.2	RTM000300
Oil cooler set 12/16 (for intensive use - Requires 12 V)	REF10000
PTO shaft type 3	CAR00001A / CAR00025
Tachometer and hour counter VPF/VPE for PTO	COM000500
Sappie 380 mm / 800 mm	SAP00001 / SAP00002

*For other models and kits. CONTACT US

Hydraulic log winch for splitters mechanical or remote controlled

SPLITTING RANGE




Log winch with winding limit switch

■ **Log winch**

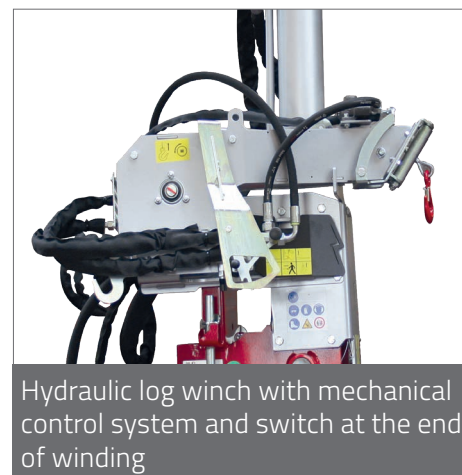
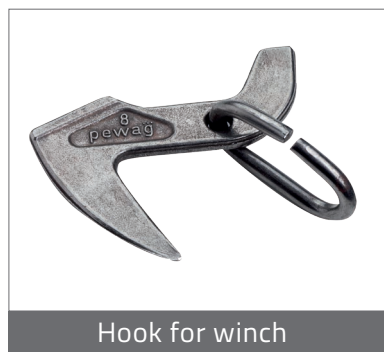
The log winch can pull 600 kg logs on a 20 m distance. The hydraulic winch is available in remote (need 12 V) or mechanical control. Can be adapted on splitter V12/16

- Traction power : 600 kg
- Pull average speed : 0,5 m/s - Adjustable
- Cable length : 20 m
- Ø cable : 6 mm
- Weight : 75 kg
- Safety switch at the end of winding

Hydraulic log winch with mechanical control



VIDEO ON
WWW.A-M-R.FR



Mechanical controlled log winch V12/16	TTB000206
Remote controlled log winch V12/16	TTB00207
Plier for winch 70 cm 2000 kg	PIN000300
Plier for winch 55 cm 1500 kg	PIN000200
Hook for winch	CRO000100