

 **FTG** | MOHEDA



A good day in the forest...



Forest Technology Group

Forest Technology Group supports forestry workers with unique, high-quality products for harvesting, transporting and processing timber. We design, develop and produce functional forestry trailers and cranes for foresters.

Forest Technology Group – FTG – brings together five strong and independent brands, each with unique characteristics to match its target group.

Our combined range spans everything from forestry trailers, cranes and forestry accessories to ground preparation tools, road drags and harvester heads – all designed to work both hard and efficiently in the forest.





...is a day when everything simply works!

As a forester, you are entitled to make demands. Your vehicles and equipment must, quite simply, work to ensure safe and efficient harvesting. Forestry trailers from Moheda meet such demands. Smart, sturdy machines that work hard and intensively even when faced with the toughest conditions. FTG Moheda delivers what you need for a good day in the forest.

A RELIABLE HARD WORKER IN ANY WEATHER

Every Moheda forestry trailer has been developed to withstand rough handling. A sturdy powerhouse with a well-considered design that closely follows the terrain without feeling ungainly. A reliable and flexible hard worker with impressive lifting specifications that simply gets the job done regardless of season or weather.

Our range encompasses forestry trailers for all types of forestry work – from forwarding forest residues, firewood and thinned stands to hauling timber from heavier final logging.

A FORESTRY TRAILER OF YOUR MAKING

A forestry trailer from Moheda is what you make it. With great freedom in choosing each option, you can shape the trailer to your exact requirements.

You start with our wide range of trailer models with the power, brakes and hydraulics to match your needs. You complete your trailer with diverse options spanning, for example, valve assemblies, cranes, grapples and winches.

HIGHLY RELIABLE – LONG SERVICE LIFE

The total cost of ownership is important. Balancing tight harvesting budgets demands low operating costs and a minimum of maintenance.

Moheda's trailers are made in Sweden and deliver high quality right down to the smallest detail. Our trailers last a long time, incur low repair and service costs and boast favourable resale values.



1 TRAILER

We can offer trailers from 9 to 15 tonnes, both powered and non-powered. The choice of trailer *size* is based on the performance of the tractor and the customer's needs to ensure a tractor-trailer combination best suited to the terrain.

2 POWER

For hilly terrain with waterlogged areas, you may need a *powered* trailer. For trailers from 10 tonnes and upwards, Robson drive is often chosen, with a roller powering the wheels hydraulically. For our 12-tonne trailer, we offer *hub drive* on the rear wheel set as an alternative.

3 BRAKES

For steep terrain and transporting loads, we recommend a trailer with *brakes*. We can offer both *disc brakes* and *drum brakes*.

4 HYDRAULIC SYSTEM

If the tractor's hydraulic flow is insufficient, you have the option of adding a separate *hydraulic system* for increased capacity.

5 CRANE

For each of our trailers, we offer a number of well-considered *crane* options. The crane is selected based on reach and lifting capacity requirements.

6 ROTATOR AND GRAPPLE

For each crane, we have a number of *rotator* and *grapple* recommendations. We also offer the option of choosing from a number of alternative grapples and buckets. Yet another option is a *damper link*, which reduces any jolting of the grapple.

7 VALVE ASSEMBLIES

We have many *valves* and *control systems* to choose from, ranging from simpler mechanical valves to more advanced, fully electric control systems.

8 WINCHES

A *winch with radio control* is chosen for almost all trailers today. We offer two alternatives. Our 1410 model with 1400 kg of traction (6 mm x 35 m cable) is the most popular, although we also have our 1810 model with 1800 kg of traction (8 mm x 30 m cable).

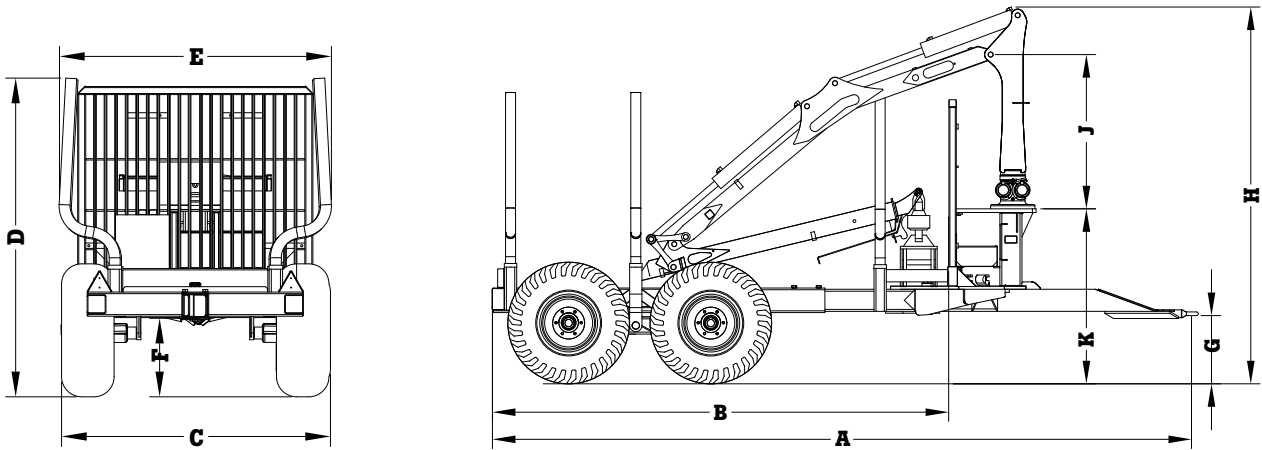
9 COMMON OPTIONS

Examples of other common options include outriggers, toolboxes, chainsaw holders and work lighting.

1. TRAILER

Trailers for hard work in any weather

The Nordic climate, which varies greatly between seasons, places special demands on both function and ergonomics. Moheda's Swedish-made forestry trailers are designed to work both hard and efficiently in any weather. Our range offers great alternatives for both professional and amateur foresters.



Trailer	Crane	Wheel size	A	B	C	D	E	F	G	H	J	K
M91	K31T	400/60x15.5	5400	3650	2030	1970	1910	510	500	2760	1210	1150
M101	K31T/K41T	400/60x15.5	5180-5810	3320-3950	2150	2150-2190	2100	560	500	2900	1210	1250
M101	K31T/K41T	15/70x18	5180-5810	3320-3950	2130	2180-2270	2100	620	500	2910	1210	1260
M101	M41T	400/60x15.5	5180-5810	3320-3950	2150	2150-2190	2100	560	500	2950	1260	1250
M101	M41T	15/70x18	5180-5810	3320-3950	2130	2180-2270	2100	620	500	2960	1260	1260
M101 4WD	K41T	400/55x22.5	4945-5575	3080-3710	2190	2210-2350	2100	690	500	2880	1210	1280
M101 4WD	M41T	400/55x22.5	4945-5575	3080-3710	2190	2210-2350	2100	690	500	2930	1260	1280
M121	M41T	15/70x18	5220-5885	3355-4020	2180	2370-2505	2200	660	500	2940	1260	1280
M121	M41T	500/50x17	5220-5885	3355-4020	2300	2340-2475	2200	650	500	2940	1260	1280
M121	M51T	500/45x22.5	5220-5885	3355-4020	2300	2350-2500	2200	675	500	2960	1280	1285
M121 4WD	M41T	500/45x22.5	5190-5855	3325-3990	2300	2380-2500	2200	690	500	2930	1260	1300
M121 4WD	M51T	500/45x22.5	5190-5855	3325-3990	2300	2380-2500	2200	690	500	2950	1280	1300
M121 2ND	M41T	500/45x22.5	5555-5885	3480-4020	2360	2340-2500	2200	650	500	2940	1260	1280
M121 2ND	M51T	500/45x22.5	5555-5885	3480-4020	2360	2340-2500	2200	675	500	2960	1280	1285
M141 4WD	M51T	500/60x22.5	5970-6450	3900-4380	2370	2850	2380	540	500	3300	1380	1500
M141 4WD	M60-M75	600/60x22.5	5970-6450	3900-4380	2500	2850	2380	540	500	3300	1380	1500
M151 4WD	M81T/M81DT	700/40x22.5	5970-6450	3900-4380	2580	2850	2380	540	500	3450	1352	1500



TECHNICAL DATA

All technical data for our trailers can be found on our website. Scan the QR code to go directly to the web page.



NON-POWERED TRAILERS



MOHEDA M91

The M91 has a 9-tonne load capacity and is Moheda's smallest forestry trailer.

An agile trailer suited to smaller tractors that is equipped as standard with 400/60x15.5 wheels, trailer steering and telescopic outriggers.

Load capacity (kg)	9000
Load space (m ²)	2
Weight (kg)	1115
Tyre size	400/60x15.5



MOHEDA M101

The M101 is an agile trailer with a 10-tonne load capacity well suited to most farms. Suitable for both farm and forestry use.

The trailer is equipped as standard with 400/60x15.5 wheels and trailer steering. The load space up to the gate measures 2.3 m².

Load capacity (kg)	10000
Load space (m ²)	2.3
Weight (kg)	1395
Tyre size	400/60x15.5



MOHEDA M121

The M121 has a 12-tonne load capacity and is one of the larger trailers in our range.

The generous load capacity makes this trailer an ideal choice for both private forest owners and forestry contractors.

The M121 is equipped as standard with 15/70x18 wheels and trailer steering. The load space up to the gate measures 2.7 m².

Load capacity (kg)	12000
Load space (m ²)	2.7
Weight (kg)	1860
Tyre size	15/70x18



MOHEDA M141

The M141 has a 15-tonne load capacity and is Moheda's largest forestry trailer. The M141 is the perfect choice for both larger forest owners and forestry contractors.

Equipped as standard with 500/60x22.5 wheels and trailer steering. The load space up to the gate measures 3.3 m².

Load capacity (kg)	15000
Load space (m ²)	3.3
Weight (kg)	2900
Tyre size	500/60x22.5



POWERED TRAILERS



MOHEDA M101 4WD

The M101 4WD is an agile trailer with a 10-tonne load capacity that, thanks to its hydraulic drive, can easily traverse demanding terrain. Suitable for both farm and forestry use.

The M101 4WD is equipped as standard with 400/55x22.5 wheels and trailer steering. The load space up to the gate measures 2.3 m².

Load capacity (kg)	10000
Load space (m ²)	2.3
Weight (kg)	2080
Tyre size	400/60x15.5



MOHEDA M121 4WD

The M121 4WD is a bestseller among powered trailers with a load capacity of 12 tonnes. Thanks to its hydraulic drive, this trailer makes easy work of challenging terrain.

Equipped as standard with 500/45x22.5 wheels and trailer steering. The load space up to the gate measures 2.7 m².

Load capacity (kg)	12000
Load space (m ²)	2.7
Weight (kg)	2310
Tyre size	500/45x22.5



MOHEDA M121 2ND

The M121 2ND is a *hub-powered* trailer with a 12-tonne load capacity.

The trailer can traverse demanding terrain with the aid of its hydraulic hub drive. The hub drive also provides the option of fitting tracks or chains. An ideal alternative for private forest owners and forestry contractors.

Equipped with 500/45x22.5 wheels and trailer steering. The load space up to the gate measures 2.7 m².

Load capacity (kg)	12000
Load space (m ²)	2.7
Weight (kg)	2800
Tyre size	500/45x22.5



MOHEDA M141/151 4WD

The M141 4WD and the M151 4WD are FTG Mohedas largest powered trailers with a 15-tonne load capacity.

They differ in terms of traction (3150/4000 kg) and wheel size, with the M141 4WD equipped with 500/60x22.5 wheels as standard. The M151 4WD is equipped with 600/55x22.5 wheels.

The load space up to the gate measures 3.3 m².

Load capacity (kg)	15000
Load space (m ²)	3.3
Weight (kg)	3500
Tyre size	500/60x22.5 600/55x22.5



2. POWER

Powered or non-powered? Let the terrain decide!

Variations in both the terrain and manoeuvrability make working in the forest a real challenge. All FTG Moheda forestry trailers offer high ground clearance to make getting around easier. We also offer both powered and non-powered trailers. In lighter terrain, a non-powered trailer is just fine. In hilly, wet terrain, on the other hand, a powered trailer helps reduce both the load on the tractor and the risk of getting stuck.

Our *non-powered trailers* boast a durable and well-proven design, popular with our customers for generations. The high ground clearance and the ingenious bogie design make climbing over tree stumps and rocks easier.

In more demanding terrain, a *powered* Moheda trailer might prove necessary. The integrated drive system helps power your tractor-trailer combination through the forest without getting stuck.

Robson drive, in which a roller powers the wheels hydraulically, performs impressively regardless of the terrain and ensures great tractor-trailer interaction.

Our model M121 2ND is equipped with *hub drive* on the rear wheel set. Hub drive also enables you to use chains or tracks in particularly demanding terrain.

The drive is easily engaged and disengaged via an electrically controlled valve that is operated by switches in the tractor. With the drive disengaged, the trailer can move freely.

Moheda's powered trailers have held a leading market position for decades, offering you peace of mind in your choice of trailer.

NON-POWERED



FTG Moheda has a unique easy-climb bogie that provides lower ground pressure on the front wheel set, allowing the trailer to easily pass over obstacles.

ROBSON DRIVE



Robson drive ensures a powerful, all-wheel drive trailer with high traction and a reliable build.

Drive rollers adapted to tread patterns ensure smooth operation and superb manoeuvrability.

HUB DRIVE



Hub drive provides powerful, two-wheel drive and the ability to use chains or tracks in particularly demanding terrain.

The design combines our easy-climb bogie with *Black Bruin wheel motors* on the rear wheels.



Drive traction	kg
M101 4WD	2000 kg
M121 2ND	2500 kg
M121 4WD	2500 kg
M141 4WD	3150 kg
M151 4WD	4000 kg

3. BRAKES

Trailer brakes for increased safety

All our forestry trailers can be equipped with braking systems, either disc brakes or drum brakes. Trailer brakes provide increased safety, both on and off the road. When hauling heavy loads, the brakes also help reduce any strain on the tractor.

A trailer fitted with *disc brakes* offers a simple and easily serviced design fit for any forest conditions.

The brake discs and yokes are exposed and easily accessed, which reduces the risk of dirt, mud and moisture accumulating and impairing braking performance. This allows trailers with disc brakes to be used in the most demanding terrain.

Drum brakes provide impressive braking performance thanks to the large surface area of the brake pads.

Drum brakes are based on a technology that uses encapsulated systems and are an excellent alternative when the trailer is used for road transport and loading by the roadside.



4. HYDRAULIC SYSTEM

Hydraulic system – for greater hydraulic flow

In cases where the tractor's hydraulic flow is insufficient for the preferred forestry trailer, a separate hydraulic system mounted on the trailer may be necessary. Choose between various types of pumps depending on trailer size and capacity.



GEAR PUMP
70 L/MIN

Item no. FA0067

M91	M101	M101 4WD	M121
M121 4WD	M121 2ND	M141 4WD	M151 4WD



GEAR PUMP
90 L/MIN

Item no. FA0063

M91	M101	M101 4WD	M121
M121 4WD	M121 2ND	M141 4WD	M151 4WD



PISTON PUMP
81 L/MIN

Can be mounted
on drawbar
Item no. FA0550

M91	M101	M101 4WD	M121
M121 4WD	M121 2ND	M141 4WD	M151 4WD



PISTON PUMP
101 L/MIN

Can be mounted on
drawbar
Item no. FA0546

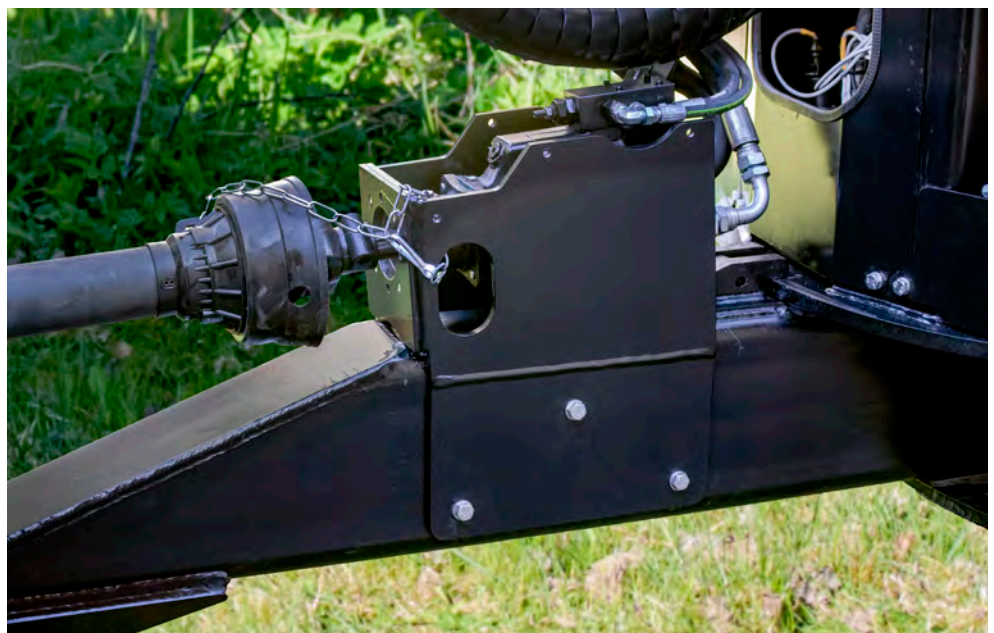
M91	M101	M101 4WD	M121
M121 4WD	M121 2ND	M141 4WD	M151 4WD



LS PUMP
130 L/MIN

Drawbar mounting
only
Item no. FA0421

M91	M101	M101 4WD	M121
M121 4WD	M121 2ND	M141 4WD	M151 4WD





A forestry trailer from Moheda is what you make it. With great freedom in choosing each component, you can shape the trailer to your exact requirements.

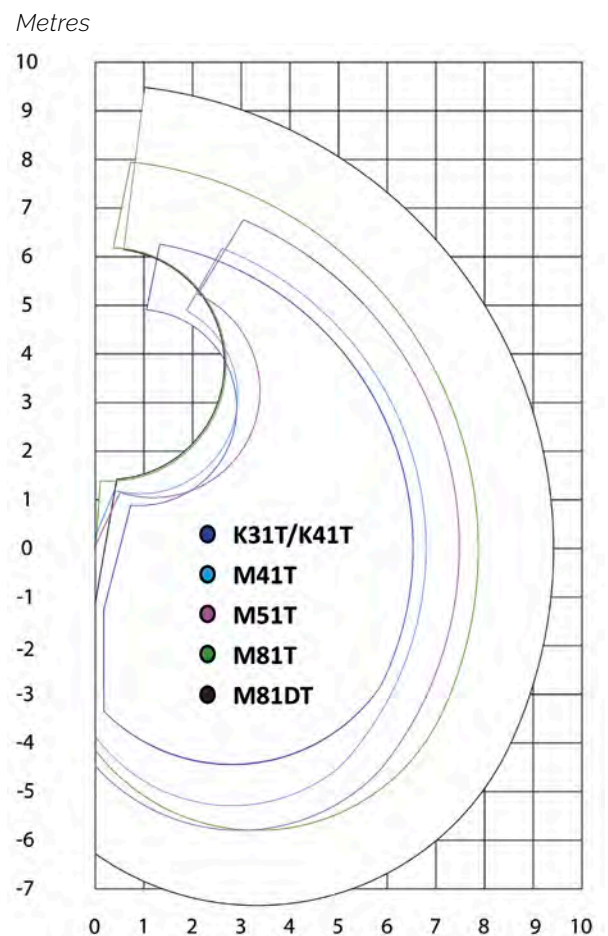


5. CRANE

Powerful cranes with a long reach

Moheda cranes combine qualities such as power, reach and reliability. The range spans cranes with reaches from 6.5 metres up to 9.4 metres, all with great freedom of choice as regards valve assemblies, grapples and other equipment. Most Moheda cranes have the cylinder mounted on the top side of the lifting arm, which provides greater lifting capacity and protection against logs and impacts. The cranes also have a smart linkage system in the knuckle, making crane movements both smooth and precise.

- Moheda trailers are available with several different valve options and control systems, be that manual, servo-controlled or electrically controlled.
- Superb solution for parking the crane with the knuckle against the trailer, reducing wear on the slewing motor and linkages during transport. This setup provides a low centre of gravity and good handling when driving with an empty trailer.
- The design with the lifting cylinder above the lifting arm protects the cylinder and optimises lifting capacity. A Moheda crane gets stronger the higher you lift the load!
- Stable telescopes with large sliding pads provide extra reach and safe operation. The hose guard keeps the hoses in place during operation.
- Knuckles with linkages provide smooth movement patterns and steady crane movements. Well-considered hose routing through the knuckle ensures reliable protection in demanding situations.
- The hose bridge and hose grommets on the crane pillar prevent strain on the hose and keep it in place without unnecessary wear. Greater reliability and reduced service requirements.
- Smart hose routing at the crane tip for protection and reduced wear. A damper link ensures safe operation during long shifts.



Movement diagram

TECHNICAL DATA

All technical data for our cranes can be found on our website. Scan the QR code to go directly to the page.



Trailer/Crane	K31T	K41T	M41T	M51T	M81T	M81DT
M91	•					
M101	•	•	•			
M101 4WD	•	•	•			
M121		•	•	•		
M121 4WD		•	•	•		
M121 2ND		•	•	•		
M141 4WD				•		
M151 4WD					•	•



MOHEDA K31T

The Moheda K31T is intended for use with the Moheda M91 and M101 trailers. A crane for anyone who needs a long reach.

The K31T is equipped with a telescopic arm with a reach/lifting capacity of 6.5 m/260 kg. It has a linkage system and top-mounted lifting cylinder for better movement patterns. Lifting torque of 25 kNm.

Reach (m)	6.5
Lifting torque, gross (kNm)	25
Lifting capacity at max. reach (kg)	260
Lifting capacity, 4 m (kg)	670
Slewing torque (kNm)	8.5
Slewing angle	360°
Rec. oil flow (L/min)	25–35
Weight w/o grapple and rotator (kg)	620



MOHEDA K41T

The Moheda K41T is intended for use with the Moheda M101, M121, M101 4WD and M121 4WD trailers. A crane for anyone who needs extra reach.

The K41T is equipped with a telescopic arm with a reach/lifting capacity of 6.5 m/385 kg. It has a linkage system and top-mounted lifting cylinder for better movement patterns. Lifting torque of 33 kNm.

Reach (m)	6.5
Lifting torque, gross (kNm)	33
Lifting capacity at max. reach (kg)	385
Lifting capacity, 4 m (kg)	920
Slewing torque (kNm)	8.5
Slewing angle	360°
Rec. oil flow (L/min)	30–40
Weight w/o grapple and rotator (kg)	640



MOHEDA M41T

The M41T is a crane for anyone who needs extra reach and power. This crane is equipped with a telescopic arm with a reach/lifting capacity of 6.9 m/450 kg.

It has a linkage system and top-mounted lifting cylinder for better movement patterns and boasts a lifting torque of 43 kNm. The angled lifting arm can be parked firmly against the trailer.

Reach (m)	6.9
Lifting torque, gross (kNm)	43
Lifting capacity at max. reach (kg)	450
Lifting capacity, 4 m (kg)	900
Slewing torque (kNm)	11
Slewing angle	360°
Rec. oil flow (L/min)	35–50
Weight w/o grapple and rotator (kg)	720



MOHEDA M51T

The Moheda M51T is a powerful crane with a long reach.

This crane is equipped with a telescopic arm with a reach/lifting capacity of 7.5 m/500 kg. It has a linkage system and top-mounted lifting cylinder for better movement patterns and boasts a lifting torque of 55 kNm.

The angled lifting arm can be parked firmly against the trailer.

Reach (m)	7.5
Lifting torque, gross (kNm)	55
Lifting capacity at max. reach (kg)	500
Lifting capacity, 4 m (kg)	1100
Slewing torque (kNm)	16
Slewing angle	360°
Rec. oil flow (L/min)	40–60
Weight w/o grapple and rotator (kg)	740





MOHEDA M81T

The Moheda M81T is intended for use with the *Moheda M151 4WD* but can also be mounted on a tractor or a medium-sized forestry machine.

Compared to its predecessor, the M81T has been improved as regards reach, lifting torque, slewing torque and movement patterns.

The crane has a *single telescope* with well-protected hose routing.

Reach (m)	7.8
Lifting torque, gross (kNm)	81
Lifting capacity at max. reach (kg)	700
Lifting capacity, 4 m (kg)	1450
Slewing torque (kNm)	21
Slewing angle	360°
Rec. oil flow (L/min)	70–90
Weight w/o grapple and rotator (kg)	1320



MOHEDA M81DT

The Moheda M81DT is intended for use with the *Moheda M151 4WD* but can also be mounted on a tractor or a medium-sized forestry machine. The difference is that the DT model has a newly developed *double telescope* with well-protected *internal hose routing*.

The M81DT has seen considerable improvement as regards key characteristics such as reach, lifting torque, slewing torque and movement patterns.

Reach (m)	9.4
Lifting torque, gross (kNm)	81
Lifting capacity at max. reach (kg)	500
Lifting capacity, 4 m (kg)	1250
Slewing torque (kNm)	21
Slewing angle	360°
Rec. oil flow (L/min)	70–90
Weight w/o grapple and rotator (kg)	1400



6. ROTATORS AND GRAPPLES

Grapples and buckets take a firm grip on the load

A broad offering of rotators, grapples and buckets ensures a firm grip on the load regardless of the choice of trailer and type of harvesting. We offer wide ranges when it comes to *rotators* and *rotator links* as well as *timber grapples* and *buckets*.



ROTATOR GR300

Item no. KA2690

K31T K41T M41T M51T
M81T M81DT



ROTATOR GR400

Item no. KA2692

K31T K41T M41T M51T
M81T M81DT



ROTATOR GR400F

Item no. KA2693

K31T K41T M41T M51T
M81T M81DT



ROTATOR GV6

Item no. KA1987

K31T K41T M41T M51T
M81T M81DT



ROTATOR LINK W/O DAMPER (CR300)

Item no. MB21796

K31T K41T M41T M51T
M81T M81DT



ROTATOR LINK W/O DAMPER (CR400)

Item no. MB21797

K31T K41T M41T M51T
M81T M81DT



ROTATOR LINK SINGLE DAMPER (CR300/400)

Item no. KA2691

K31T K41T M41T M51T
M81T M81DT



ROTATOR LINK SINGLE DAMPER (GV 6)

Item no. KA2012

K31T K41T M41T M51T
M81T M81DT



**ROTATOR LINK
DUAL DAMPERS
(GV 6)**

Item no. K1985

- K31T
- K41T
- M41T
- M51T
- M81T
- M81DT



**TIMBER
GRAPPLE FB160**

Item no. KA1653

- K31T
- K41T
- M41T
- M51T
- M81T
- M81DT



**TIMBER
GRAPPLE FB190**

Item no. KA1692

- K31T
- K41T
- M41T
- M51T
- M81T
- M81DT



**TIMBER
GRAPPLE
FB190WF**

Item no. KA1918

- K31T
- K41T
- M41T
- M51T
- M81T
- M81DT



**TIMBER
GRAPPLE G260L**

Item no. M22160

- K31T
- K41T
- M41T
- M51T
- M81T
- M81DT



**TIMBER
GRAPPLE FB260**

Item no. KA1862

- K31T
- K41T
- M41T
- M51T
- M81T
- M81DT



**TIMBER GRAPPLE
G210S (49/59)**

Item no. M22140-1(59 mm)
Item no. M22140(49 mm)

- K31T
- K41T
- M41T
- M51T
- M81T
- M81DT



**BRUSHWOOD
GRAPPLE G210SR
(49/59 MM)**

Item no. M22140-2(59 mm)
Item no. MB21820-2(49 mm)

- K31T
- K41T
- M41T
- M51T
- M81T
- M81DT



**GRAPPLE BUCKET
G180GS
(400 MM WIDE)**

Item no. KA1882

- K31T
- K41T
- M41T
- M51T
- M81T
- M81DT





GRAPPLE BUCKET G180GS (700 MM WIDE)

Item no. M22450

K31T K41T M41T M51T
M81T M81DT



GRAPPLE BUCKET FB120V

Item no. KA2029

K31T K41T M41T M51T
M81T M81DT



BUCKET KIT

	G160L	G210S	G260L	FB160	FB190	FB260
Item no.	M22312	M22317	M22316	M22322	M22323	KA2563
Volume (l)	110	190	200	110	120	150
Length (mm)	810	800	820	582	600	750
Height (mm)	380	470	520	460	460	550
Width (mm)	480	630	80	560	590	650
Weight (kg)	45	70	80	33	35	45



ADAPTER PLATE 49 MM

Item no. KA1863

K31T K41T M41T M51T
M81T M81DT



ADAPTER PLATE 59 MM

Item no. KA2039

K31T K41T M41T M51T
M81T M81DT



ADAPTER 49 MM TO 59 MM

Item no. KA1759

K31T K41T M41T M51T
M81T M81DT



ADAPTER 59 MM TO 49 MM

Item no. FA0789

K31T K41T M41T M51T
M81T M81DT



DATA TABLE GRAPPLES

	G210S	G260L	FB160	FB190	FB190WF	G210SR
Item no.	M22140	M22160	KA1653	KA1692	KA1918	MB21820-1
Grapple size m ²	0.21	0.26	0.16	0.195	0.195	0.21
Max. grapple width (mm)	1200	1210	1010	1200	1200	1200
Min. grapple width (mm)	70	30	50	50	50	70
Height (mm)	786	740	402	416	400	790
Width (mm)	310	280	217	272	295	310
Cylinder size (mm)	70/40	70/40	70/60	70/63	70/63	70/40
Weight (kg)	110	75	55	68	81	110
Rotator axle (mm)	49/59	49/59	49	49	flange	49/59
Force at teeth (kN)	8	6	7.5	9	9	8

7. VALVE ASSEMBLIES

Valve assemblies and control systems matching your needs

There is much to consider when choosing *valve assemblies* and *control systems*. Ergonomics, handling and tractor installation, for instance, but there is a valve assembly for every customer. All our PCL and EHC valves are conveniently mounted in the crane base for a low centre of gravity and the best possible protection.

With the aid of the valve rack, the valve is easily pulled out for servicing.



HCD3M MULTI-LEVER VALVE

K31T K41T M41T M51T
M81T M81DT



HCD3M TWO-LEVER VALVE

K31T K41T M41T M51T
M81T M81DT



HCD3M LIGHT-WEIGHT VALVE

K31T K41T M41T M51T
M81T M81DT



PCL VALVE EL. ON/OFF

K31T K41T M41T M51T
M81T M81DT



PCL VALVE PROP

K31T K41T M41T M51T
M81T M81DT



EHC VALVE MINI LEVER

K31T K41T M41T M51T
M81T M81DT



EHC VALVE SCANRECO

K31T K41T M41T M51T
M81T M81DT



EHC VALVE CRANE TIP CONTROL

K31T K41T M41T M51T
M81T M81DT



JOYSTICK MOUNT BRACKET

Valtra 6000
Item no. N8002302

- K31T K41T M41T M51T
- M81T M81DT



JOYSTICK MOUNT BRACKET

Valtra N series
Item no. NB37486-0

- K31T K41T M41T M51T
- M81T M81DT



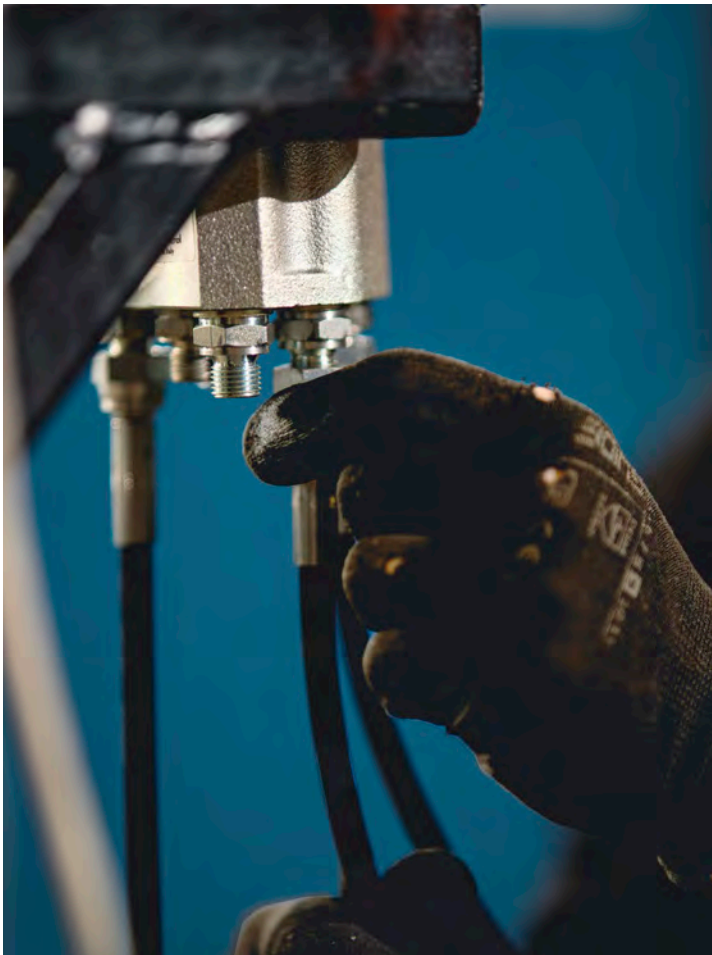
JOYSTICK MOUNT (PAIR)

Item no.
NB8002300

- K31T K41T M41T M51T
- M81T M81DT



Moheda's trailers are completed with diverse options spanning, for example, valve assemblies, cranes, grapples and winches.



8. WINCHES

Extend your working range with a hydraulic winch

During your day in the forest, sometimes you need more reach than your crane has to offer. A *winch* extends the working range of your trailer, quickly and conveniently enabling you to pull stems close enough for the crane arm to reach. We offer a wide range of winch models to choose from based on criteria such as *mounting method*, *lifting capacity* and *reach*.



SEPARATE WINCH MV1410

Item no. FA0388

K31T	K41T	M41T	M51T
M81T	M81DT		

M91	M101	M101 4WD	M121
M121 4WD	M121 2ND	M141 4WD	M151 4WD

SEPARATE WINCH MV1810

Item no. FA0389

K31T	K41T	M41T	M51T
M81T	M81DT		

M91	M101	M101 4WD	M121
M121 4WD	M121 2ND	M141 4WD	M151 4WD

WINCH KIT MV1410

Alternative mounting
Item no. FA0398

K31T	K41T	M41T	M51T
M81T	M81DT		

M91	M101	M101 4WD	M121
M121 4WD	M121 2ND	M141 4WD	M151 4WD

WINCH KIT MV1810

Alternative mounting
Item no. FA0399

K31T	K41T	M41T	M51T
M81T	M81DT		

M91	M101	M101 4WD	M121
M121 4WD	M121 2ND	M141 4WD	M151 4WD

WINCH MOUNTING KITS

Item no.	K31T	K41T	M41T	M51T	M81T	M81DT	M91	M101	M101 4WD	M121	M121 4WD	M121 2ND	M141 4WD	M151 4WD
FA0392							•							
FA0393							•							
FA0394								•	•	•	•	•	•	•
FA0395								•	•	•	•	•	•	•
FA0396	•	•	•	•	•	•								
FA0397	•	•	•	•	•	•								



**PULLEY
VERTICAL**

Item no. MB31360-4

K31T K41T M41T M51T
M81T M81DT



**PULLEY
SUSPENDED**

Item no. MB31360-3

K31T K41T M41T M51T
M81T M81DT



**PULLEY
OPENABLE**

Item no. AA2968

K31T K41T M41T M51T
M81T M81DT



**RADIO CONTROL
FOR WINCH**

**When purchasing a
new winch**

Item no. M43436

For retrofitting

Item no. M43436-1

K31T K41T M41T M51T
M81T M81DT

9. OTHER ACCESSORIES

Trailer accessories for that little extra

Small means can make a good day in the forest even better. Smart solutions and well-considered accessories can increase capacity and simplify work.



OUTRIGGERS HYDRAULIC

Item no. M23135

M91	M101	M101 4WD	M121
M121 4WD	M121 2ND	M141 4WD	M151 4WD



OUTRIGGERS HYDRAULIC

Item no. AA3505

M91	M101	M101 4WD	M121
M121 4WD	M121 2ND	M141 4WD	M151 4WD



EXTENDER STAKES 1 PAIR

Item no. M44220

M91	M101	M101 4WD	M121
M121 4WD	M121 2ND	M141 4WD	M151 4WD



SEPARATING STAKES 1 PAIR

Item no. M44210

M91	M101	M101 4WD	M121
M121 4WD	M121 2ND	M141 4WD	M151 4WD



ROTATION STOP

Item no. AA8940

M91	M101	M101 4WD	M121
M121 4WD	M121 2ND	M141 4WD	M151 4WD



ASSORTMENT KIT

Item no. FA0777

M91	M101	M101 4WD	M121
M121 4WD	M121 2ND	M141 4WD	M151 4WD



HYDRAULIC STAKES

Item no. FA0493

M91	M101	M101 4WD	M121
M121 4WD	M121 2ND	M141 4WD	M151 4WD



FORWARDER BUNKS

Item no. FA0811

M91	M101	M101 4WD	M121
M121 4WD	M121 2ND	M141 4WD	M151 4WD



TOOLBOX

Item no.	Right or left	M91	M101	M101 4WD	M121	M121 4WD	M121 2ND	M141 4WD	M151 4WD
AA3610-V	Left	•							
AA3610-H	Right		•	•	•	•	•		
AA3488-V	Left		•	•	•	•	•		
AA3488-H	Right		•	•	•	•	•		
AA3540	Both		•	•	•	•	•		



BRUSHWOOD SHEETING – GALVANISED

Item no.	Suitable for	M91	M101	M101 4WD	M121	M121 4WD	M121 2ND	M141 4WD	M151 4WD
FA0782		•							
FA0512			•	•					
FA0513					•	•	•		
AA5249								•	•



SINGLE SLEWING HOUSING

Item no. AA2320-2

M91	M101	M101 4WD	M121
M121 4WD	M121 2ND	M141 4WD	M151 4WD



DUAL SLEWING HOUSING

Item no. AA2320-1

M91	M101	M101 4WD	M121
M121 4WD	M121 2ND	M141 4WD	M151 4WD



SLEWING HOUSING LARGER MODEL

Item no. AA2340-1

M91	M101	M101 4WD	M121
M121 4WD	M121 2ND	M141 4WD	M151 4WD

Please visit our website or talk to your local dealer for more information about our accessories.





VALVE LIFTER TOOL

Item no. KA1014

M91	M101	M101 4WD	M121
M121 4WD	M121 2ND	M141 4WD	M151 4WD



CHAINSAW HOLDER

For mounting on outriggers

Item no. AA3022-1

M91	M101	M101 4WD	M121
M121 4WD	M121 2ND	M141 4WD	M151 4WD



CHAINSAW HOLDER

For mounting on crane base

Item no. FA0413

M91	M101	M101 4WD	M121
M121 4WD	M121 2ND	M141 4WD	M151 4WD



2 FLOODLIGHTS REAR

Item no. KA2427

M91	M101	M101 4WD	M121
M121 4WD	M121 2ND	M141 4WD	M151 4WD



EXTRA BUNK INCL. STAKES

M91

Item no. M44115

M91	M101	M101 4WD	M121
M121 4WD	M121 2ND	M141 4WD	M151 4WD



EXTRA BUNK INCL. STAKES

M91 with taillight

Item no. AA3861

M91	M101	M101 4WD	M121
M121 4WD	M121 2ND	M141 4WD	M151 4WD



EXTRA BUNK INCL. STAKES

M101

Item no. AA3679

M91	M101	M101 4WD	M121
M121 4WD	M121 2ND	M141 4WD	M151 4WD



EXTRA BUNK INCL. STAKES

M121

Item no. AA3520

M91	M101	M101 4WD	M121
M121 4WD	M121 2ND	M141 4WD	M151 4WD



OIL COOLER WITH HOSE

M101-M121

Item no. FA0780

M91	M101	M101 4WD	M121
M121 4WD	M121 2ND	M141 4WD	M151 4WD



OIL COOLER WITH HOSE

M141-M151

Item no. FA0462

M91	M101	M101 4WD	M121
M121 4WD	M121 2ND	M141 4WD	M151 4WD



THREE-POINT HITCH CAT I

Item no. KA2775

M91	M101	M101 4WD	M121
M121 4WD	M121 2ND	M141 4WD	M151 4WD



THREE-POINT HITCH CAT II

Item no. KFB200090

M91	M101	M101 4WD	M121
M121 4WD	M121 2ND	M141 4WD	M151 4WD



WORK LIGHTING															
Item no.	Placement	K31T	K41T	M41T	M51T	M81T	M81DT	M91	M101	M101 4WD	M121	M121 4WD	M121 2ND	M141 4WD	M151 4WD
FA0427	On pillar	•	•	•	•	•	•								
FA0786	On boom	•	•	•											
FA0800	Under boom				•	•	•								
FA0787	On trailer							•	•	•	•	•	•	•	•



**THREE-POINT
HITCH CAT III**

Item no. KA2776

M91	M101	M101 4WD	M121
M121 4WD	M121 2ND	M141 4WD	M151 4WD



**REVERSING
CAMERA KIT**

Item no. KA1490

M91	M101	M101 4WD	M121
M121 4WD	M121 2ND	M141 4WD	M151 4WD



Many good reasons for choosing FTG Moheda

The art of building quality forestry trailers takes time to master. We know. We have been doing so for over 60 years. We have gradually accumulated more and more expertise and experience, and we now have a product range of which we are extremely proud. We have spent decades honing the art, enabling us to offer a technology that works in the forest and meets all requirements.

Moheda's Swedish-made forestry trailers are designed to work hard under Nordic conditions. Our designers have strived with great dedication to make Moheda's products effective, safe and durable.

Personally, we feel that we have made good progress. Today, we have strong offerings for both fulltime professional forestry workers and forest owners who spend a few weeks a year in their forest.

Our trailers can withstand rough handling and heavy loads while our powerful cranes have the strength and reach needed to work the forest both efficiently and profitably.

And our work does not end once the trailer has been delivered. Together with our dealers, we also take responsibility for ensuring that spare parts are readily available and that service and support are always close to hand.

➤ EXPERIENCE FROM THE FOREST

FTG Moheda trailers are developed *by forest people for forest people*. Many of our employees use our products in their own forests. We also maintain an ongoing dialogue with our customers when developing our products to ensure customer satisfaction and great quality.

➤ MADE IN SWEDEN

Our trailers are developed, assembled and tested at our factory in the village of Bäckefors. Situated in the densely forested heart of the Swedish province of Dalsland, this is a place where forestry and forging can trace their roots back to the 1800s. The Moheda brand originates from the Swedish province of Småland and the early 1800s.

➤ FAVOURABLE RESALE VALUE

High quality, reliability and a strong brand ensure steady demand for our forestry trailers, factors that also help ensure high resale values.

➤ QUALITY SERVICE

Nearby and readily available service and support. Fast spare parts deliveries and a broad dealer network with proprietary workshops.



