

# SCORPION PREMIUM

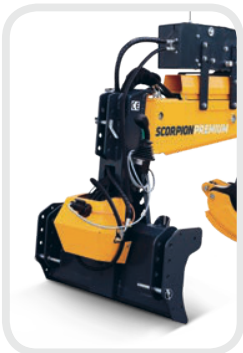
*SCORPION PREMIUM is the new generation of high quality and technologically perfected timber grabs for log manipulation. Ensuring safe, fast and easy operation for the user, they were designed to provide a good view on the work, while offering durability and low maintenance costs.*

**NEW**



Hydraulic hoses and cylinders are covered with a robust, yet dynamically designed frame, which offers protection against mechanical damage. This ensures minimum maintenance costs and extends the service life of the machine.

Scorpion Premium3



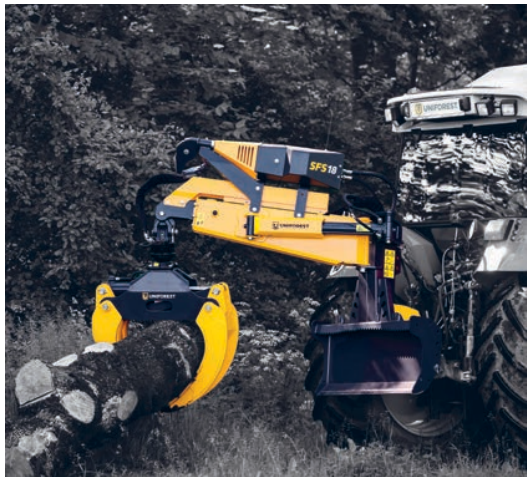
A low position of the control unit at the rear side of the machine ensures a better view over the work area.



The adjustable sliding system of the telescopic arm helps eliminate the clearance between the sliding plastic and metal. In addition, the sliding plastic is made from a special, lubrication-free material.

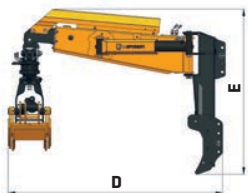
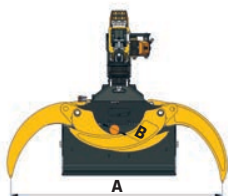


The timber grabs can be fitted with a winch to allow an easier access to the load and load handling.

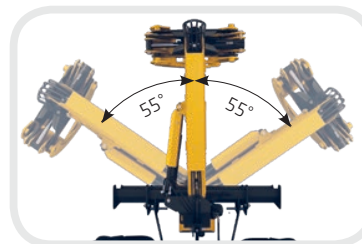


SCORPION PREMIUM3

- Improved payload capacity by 20%
- Superior design
- Robust construction
- Made of high-quality materials
- Anticorrosion protection of high quality
- All movable parts can be lubricated
- Low maintenance costs



Operated with an electronic control lever (joystick).



The telescopically extendable frame can be moved 55° to the left or to the right.



The butt plate can be extended for easier skidding.

Model			SCORPION PREM 1	SCORPION PREM 2	SCORPION PREM 3	SCORPION PREM 4
Max. opening	A	mm	1800	1800	1800	1800
Min. diameter	B	mm	70	70	70	70
Dimension	C	mm	985	985	985	985
	D		1865	1865	2025	1865
	E		1420	1420	1420	1420
Gripping power of cylinder		kN	95	95	95	95
Telescopic arm extension		mm	600	600	600	600
Swivel range		°	55 + 55	55 + 55	55 + 55	55 + 55
Butt plate width		mm	985	985	985	985
Butt plate side extension			●	●	●	●
Recommended tractor power		kW	50-80	50-80	50-80	50-80
		HP	36-59	36-59	36-59	36-59
Hydraulic swivel left-right			●	●	●	●
Telescopic arm hydraulic extension			●	●	●	●
Hydraulic rotator			●	●	●	●
Control block			●	●	●	●
Weight		kg	525	540	565	530
Connection category			II	II	II	II

● Standard | ● Option