

MOWI



Cutting-edge technology for more than 30 years

Mowi cranes have features not to be found in any other forest crane – there is only one original. With this crane and Mowi's well-built forest trailers you have a forest rig that is versatile and easy to operate, making your work in the forest quick, efficient and fun – for many years to come. What are these features that make Mowi your best friend in the forest?

The crane – unique parallel-drive as no other

The design of the Mowi crane is unique. The parallel-driven crane beam was invented by the Mowi's creator, Wiking Gunnarsson. Crane manufacturers all over the world have tried to copy this idea but Mowi has the original.

The trailer that makes the forest rig perfect

The Mowi trailer design is strongly influenced by the features

of the Mowi crane, becoming the perfect unit. Stable design, which means that some models can be used just as well without support legs. Frame-steering with well-protected cylinders on all models, movable stakes and powerful support legs for those who choose to use them. The special bogie design with high ground clearance and smooth underside will assist you over logs and stones.

The low centre of gravity and the long distance between the axles makes the trailer stable when loading and unloading – even without the use of support legs.

Swedish quality and well proven design

Mowi cranes and trailers are manufactured 100% in Sweden. Development and design are carried out by employees who have broad knowledge and long experience of forest machines.

Our new state-of-the-art production facilities in Bäckefors ensure the high quality of our products and has also provided us with the opportunity to improve the design on several points.

Double-safe design

You don't want a breakdown in the forest and we are well aware of that at Mowi. Cylinders and hoses are well protected. Careful hose routing affords further protection. The beam system is made of high-quality steel – a light construction but strong at the same time. Bushings in all links/turning points. Careful choices of material and components provide the best quality. Finally the products are tested in our own testing facility and in hands-on operation.





Double safety

Your safety is important during long, solitary working hours in the forest. Mowi has therefore adapted the size and strength of the crane so that it suits the trailer. The low centre of gravity and stabilising trailer design provides security. Furthermore after more than 30 years Mowi stands for quality and continuity. The distance to service and spare parts is never long – an assurance if, in spite of everything, the need should arise.

Double economy

Mowi can help you to save money in the forest. Low oil flows allow you to drive the tractor at low speed and you can reduce your fuel consumption and wear. Your Mowi will give you low running costs – correctly looked after it practically never breaks down. Furthermore, it commands a good second-hand value, which simplifies things when you wish to exchange your machine for a new, bigger Mowi.

Mowi – for even more tasks

The movement schedule and other features of the Mowi crane makes it particularly suitable for other tasks. Handling of big bags and round bales or ditch clearing are some examples. Work with felling grapple, energy wood harvesting and feeding wood chippers are also perfect examples. High lifting of e.g. rafters is another speciality.

A short model presentation will follow on the next pages. You will find technical data at the end of the brochure. You can read and see more about the Mowi products on our web site **www.mowi.com** There you will also find the latest news from Mowi.

Why choose Mowi?

- ▶ you quickly learn to operate a Mowi
- ▶ the tip of the crane moves in a straight line at an even speed with one simple operation
- ▶ "stronger" than conventional knuckle boom cranes – lift power in the right place
- ▶ you can load quicker and more safely with gentle movements and high precision
- ▶ excellent reach with quick method of working
- ▶ you can easily reach in front of the tractor and behind the trailer and also under "ground level"
- ▶ high lift height in the immediate surroundings, which is important when unloading
- ▶ low oil flow saves diesel oil, causes less wear to your tractor and creates a better working environment

MOWI 650



Mowi 650 - flexible but still stable

The MOWI 650 is the smallest forest trailer in the MOWI family. The trailer has a load capacity of 7 tonnes and a load area of 1.7 m². The width of just 1.80 m makes it flexible but still stable in the forest. Equipped with supporting legs and articulated frame steering as standard. Designed for lighter handling and transportation of wood and thinning material.

The MOWI 650 has the MOWI P20 as standard - a newly

developed crane model with improved movement pattern and better parking position as well as all the unique benefits, easy to drive, very accessible, stable and safe. The reach is 4.7 metres and the lifting capacity is 375 kg at full length.

The minimum oil flow requirement, 20-25 l/min, means that the MOWI 650 goes together perfectly with smaller or older tractors with limited hydraulic capacity.

MOWI 850



Mowi 850 - in the fore

The MOWI 850 is a 9-tonne trailer equipped with MOWI's specially designed forest bogie and frame-steering. Telescopic support legs are optional. Large but still adaptable in the forest with a width of approximately 2 metres (400/60x15.5 tyres). The load area, despite the low load height, is a full 2.0 m². Is suitable for transportation and handling of pulpwood, firewood and timber.

Can also be used to solve all the lifting and transportation requirements on a farm.

MOWI 1050



est and on the farm

The MOWI 850 is equipped as standard with the MOWI P25 - a newly developed crane model with all the unique benefits, easy to drive, very accessible, stable and safe.

The oil flow requirement is just 20-25 l/min. In addition the P25 has an improved movement pattern and better parking position. The reach is 5.2 metres and the lifting capacity is 400 kg at full length. The crane alternative is the MOWI P30 with a reach of 5.7 metres and a lifting capacity of 450 kg at full length.

Mowi 1050 - for tough jobs in the forest

The MOWI 1050 is a model with completely new design. It is aimed for intensive use for thinning and final cutting. A reliable choice for both professionals and self-employed forest owners who do most of the forestry work themselves. Can also be used to solve all the lifting and transportation requirements on a farm and in other activities. This forest trailer is of the highest calibre. MOWI's frame-steering and specially designed forest bogie sits on top of a completely new and sturdy rear frame. Three bunks are standard as well as protected rear light, built in to the rear bunk. Telescopic support

legs are optional. The load capacity is 10 tonnes, the load area is 2.3 m². Standard wheels are 400/60x15.5, alternative 15/70x18 for even higher ground clearance.

The MOWI 1050 is equipped as standard with the MOWI P30, a newly developed model with a reach of 5.7 metres and lifting capacity of 450 kg at full length. Alternative crane model is well-known MOWI 400 with a reach of 6.2 metres and lifting capacity of 480 kg. Both the models have all the unique MOWI benefits: easy to drive, very accessible, stable and safe.

MOWI 1050 WD



The Mowi 1050 WD - four-wheel drive

To increase accessibility and when driving under extreme conditions, drive may be needed on the trailer to get through. MOWI has chosen to equip the new MOWI 1050WD with drive. Roller-drive on all four wheels is a well-proven design technique at FTG. The differential effect, the forward/back function and the drive engaging/disengaging system are characteristics which speak for themselves. Rollers which operate between the wheels provide a safe design which is easy to use and at the same time maintenance is kept to a minimum. The wheel dimensions are 400/55x22.5.

The 1050WD has a load capacity of 10 tonnes and a load area of 2.3 m². Telescopic support legs and its own hydraulic system with a pump and tank as optional extras. The MOWI 1050WD can be equipped with a MOWI P30 parallel crane (reach 5.7 m, lifting capacity 400 kg at full length) or a MOWI 400 parallel crane (reach 6.2 m, lifting capacity 480kg at full length). Both models have unique MOWI benefits and are easy to drive, very accessible and are stable and safe.

The trailers pictured in this brochure can be fitted with extra equipment.

MOWI 1250



Mowi 1250 - the choice

A new and very powerful trailer design for professional use with heavier transportation and handling of timber connected with thinning and final cutting. Well suited for handling larger volumes of timber. Fulfills all the lifting and transportation needs in the farmyard and with other activities. Performance and function meets the highest requirements.

MOWI's frame steering and specially designed forest bogie together with the sturdy rear frame make the trailer a

COMPLEMENTARY PRODUCTS



FTG Cranes AB work continuously with method development for modern small-scale forestry.

The development of our own and complementary products has highest priority. An example where products manufactured by us are combined with other brands is harvesting/handling of bio-energy crops with MOWI cranes in combination with Naarva felling grapples. A small-scale and cost-effective method for handling brushwood and pulpwood. MOWI's parallel cranes have an ideal movement pattern for all types of harvesting devices because the crane tip follows the ground level in out/ingoing movement.

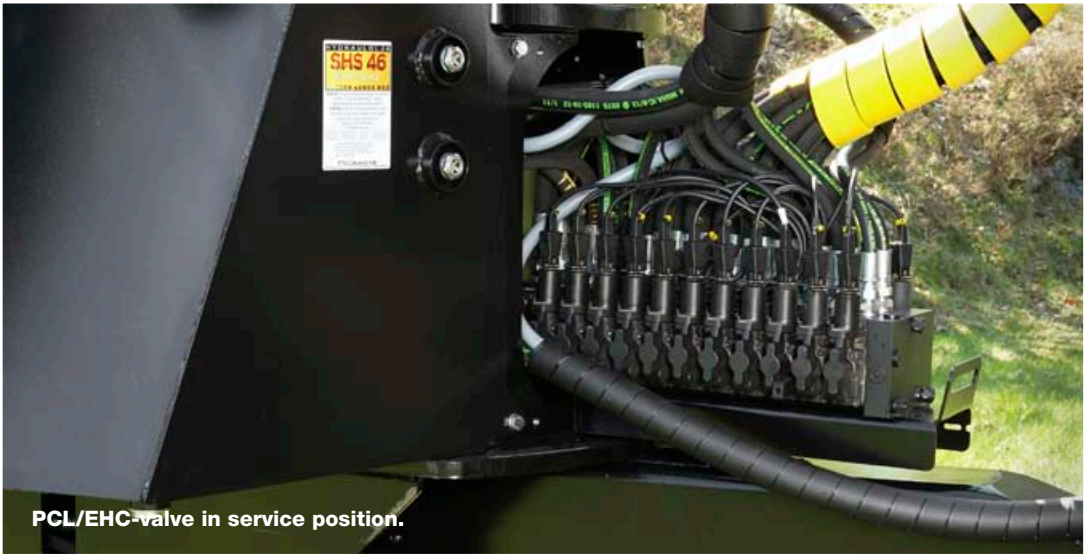
Another example is wood chippers in combination with MOWI parallel cranes – ideal for handling the in-feeding work where high capacity in chip production is the objective.

of professionals

complete rig. MOWI 1250 has well-protected rear light built into a third bunk. Telescopic support legs are optional. The load capacity is 12 tonnes and the load area is 2.7 m².

The MOWI 1250 can be equipped with a MOWI 400 crane (reach 6.2 m, lifting capacity 480 kg at full length) or MOWI 4567 (reach 6.7 m, lifting capacity 525 kg at full length). Both the models have all the unique MOWI benefits and are easy to drive, very accessible and are stable and safe.

All MOWI trailers are equipped with frame-steering – helps the trailer to “stay on track” in the forest. Hydraulic cylinders and hoses are well protected – important this is the most exposed point on the trailer.



PCL/EHC-valve in service position.

The details that makes the whole

Progress has been constant over the years. A lot of people have had ideas – within our organisation – and also among our users. Here are some features that have been added to MOWI equipment over the past 30 years. Major features, but sometimes also small details. Details that will benefit anyone who invests in MOWI equipment.

MOWI 1050 and 1250 can be equipped with a separate hydraulic system with pump and tank. Necessary if you have a drive trailer or a tractor with low oil flow.

You can also choose a PCL or EHC control valve for your forest trailer. This is then placed on a sliding bracket under the crane base, inside the crane pallet. Well protected from outside impact but still easy to service.



The MOWI crane's design with a low placed slew motor gives, from the seat of the tractor, an excellent view over the loading area. In this way the center of gravity is lowered. The loading work can be carried out quickly with precision.



Practical toolboxes on both sides and in the crane pallet available as optional extras. Makes it easy to store and protect with you any equipment you might need in the forest.



Telescopic support legs provide stability and they keep within the width of the trailer. Important at unloading. You save distance compared with folding support legs.



The special design of the MOWI forest bogie with wheel axles above the bogie center axle and the exceptional long distance between the wheel axles makes it "easy-climbing". The trailer travels gentle and safe even in rough terrain. Saves energy and power.



Drawbar with room for tractor-mounted pump is standard on MOWI 1050 and 1250.



The level of refinement is high on a MOWI. Small details which make your everyday work easier.



Clean construction – all hoses wellprotected in boom. Minimal risk of damages – high reliability – no unnecessary stop in work. Bushings at all turning points.

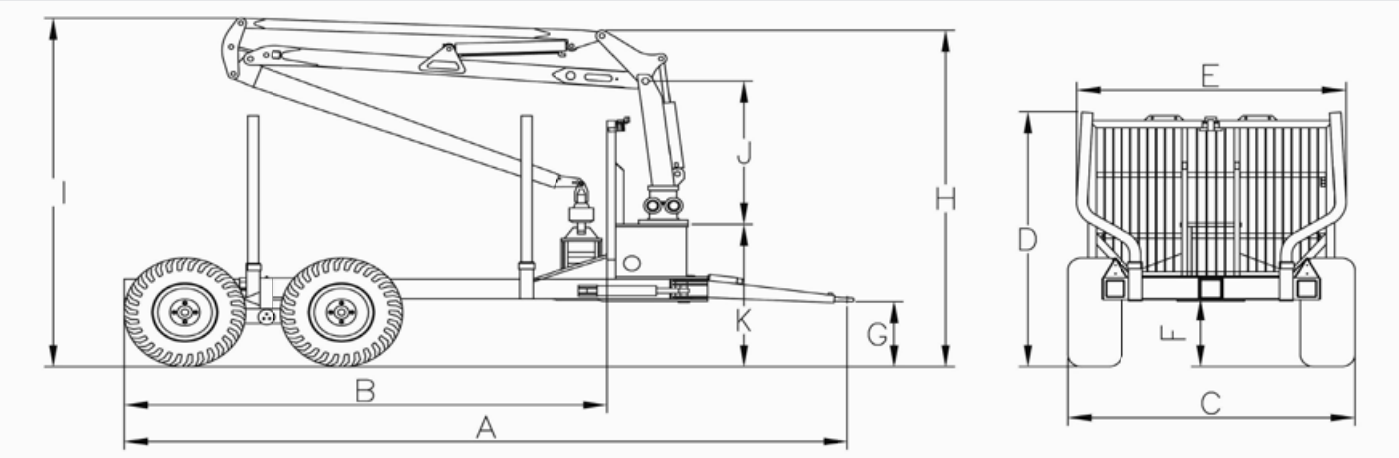


The winch can be mounted on the crane arm or, better, in the crane base or behind the crane pillar. Then it is well protected and does not interfere the view over the loading area. Also easy to reach when using and easy to service.

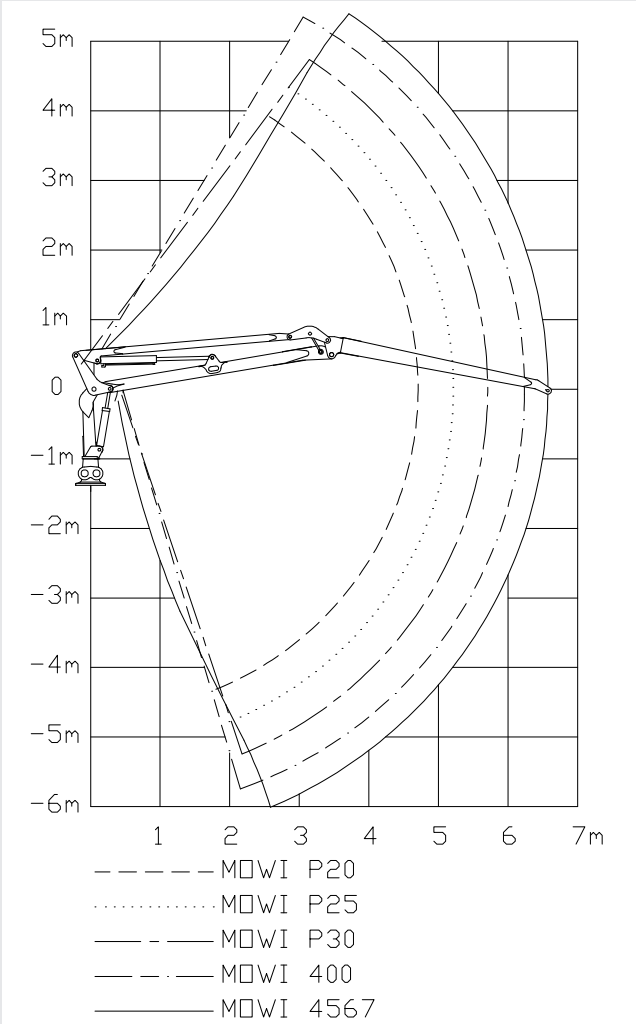


Easy to manoeuvre, easy to fit. By choosing a PCL or EHC control valve You will get a comfortable workplace. Two joy-sticks control 4-6 functions proportional. Additional functions e.g support legs controlled by push-buttons.

Technical specifications



Trailer	Crane	Wheel dim	A mm	B mm	C mm	D mm	E mm	F mm	G mm	H mm	I mm	J mm	K mm
650	P20	11.5/80x15.3	5530	3840	1800	1940	1800	570	500	2840	2850	1270	1080
650	P20	400/60x15.5	5530	3840	1930	1940	1800	570	500	2840	2850	1270	1080
850	P25	400/60x15.5	5400	3650	2030	1970	1910	510	500	2910	2940	1270	1150
850	P30	400/60x15.5	5400	3650	2030	1970	1910	510	500	2910	2950	1270	1150
1050	P30	400/60X15.5	5180-5810	3320-3950	2150	2150-2190	2100	560	500	3010	3050	1770	1250
1050	400	15/70X18	5180-5810	3320-3950	2130	2180-2270	2100	620	500	3260	3110	1400	1260
1250	400	15/70X18	5220-5885	3355-4020	2180	2350-2500	2200	660	500	3250	3250	1400	1285
1250	400	500/50x17	5220-5885	3355-4020	2300	2340-2475	2200	650	500	3240	3220	1400	1280
1250	4567	500/45x22.5	5220-5885	3355-4020	2300	2350-2500	2200	675	500	3190	3370	1400	1285
1050WD	P30	400/55x22.5	4945-5575	3080-3710	2190	2210-2350	2100	690	500	2880	3150	1210	1280
1050WD	400	400/55x22.5	4945-5575	3080-3710	2190	2210-2350	2100	690	500	2930	3250	1260	1280



The right crane for the right trailer

Trailer/Crane	650	850	1050	1250	1050WD
MOWI P20	•				
MOWI P25		•			
MOWI P30		•	•		•
MOWI 400			•	•	•
MOWI 4567				•	

Technical specifications

TRAILERS	650	850	1050	1250	1050WD
Load area, m²	1.7	2.0	2.3	2.7	2.3
Load capacity, kg	7000	9000	10000	12000	10000
Weight, kg	1050	1220	1230	1850	2080
Central beam, dim mm	140x140x6	160x160x8	160x160x8	180x180x10	160x160x8
Axles, dim mm	60x60	60x60	60x60	80x80	70x70
STANDARD EQUIPMENT					
Frame steering	yes	yes	yes	yes	yes
Hydraulic support legs	yes	optional	optional	optional	optional
Stakes, (2 per bunk)	4	4	6	6	6
Wheel dim	11.5/80x15.3	400/60x15.5	400/60x15.5	15/70x18	400/45x22.5
Third bunk	optional	optional	yes	yes	yes
OPTIONAL EQUIPMENT					
Extra bunks with stakes	yes	yes	yes	yes	yes
Dividing stakes	-	-	yes	yes	yes
Winch, trailer-mounted	yes	yes	yes	yes	yes
Remote control for winch	yes	yes	yes	yes	yes
Brakes	Drum	Disc/ Drum	Disc/ Drum	Disc/ Drum	Disc/ Drum
Rear light (inbuilt in bar)	-	yes	standard	standard	standard
LED rear light	-	optional	optional	optional	optional
Alt wheel dim	400/60x15.5	400/60x15.5	15/70x18	500/45x22.5	-
		Traction	Traction	500/50x17	
Stake extensions	-	-	yes	yes	yes
Hydraulic banks	-	-	yes	yes	yes
Toolbox	yes	yes	yes	yes	yes

CRANES	P20	P25	P30	400	4567
Reach, m	4.7	5.2	5.7	6.2	6.7
Lifting torque gross, kNm	21	26	31	37	46
Lifting capacity max reach, kg	370	400	450	480	525
Slew torque, kNm	5.0	8.5	8.5	8.5	12.0
Slewing angle	360°	360°	360°	360°	360°
Req. oil flow, l/min	20-25	20-25	25-30	30-35	35-40
System pressure, bar	170	170	170	170	170
Weight without grab and rotator, kg	500	520	540	740	900
STANDARD EQUIPMENT					
Hydraulic valve	Multi-lever	Multi-lever	Multi-lever	Multi-lever	Multi-lever
Rotator	3 tonnes	3 tonnes	3 tonnes	3 tonnes	4 tonnes
Grab	G-160L	G-160L	G-260L	G-260L	G-260LB
OPTIONAL EQUIPMENT					
Work lights crane arm	yes	yes	yes	yes	yes
Winch, crane-mounted	yes	yes	yes	yes	yes
Remote control	yes	yes	yes	yes	yes
Braked link	yes	yes	yes	yes	yes
VALVE ALTERNATIVE					
2-lever mech (HCD3M)	yes	yes	yes	yes	yes
2-lever elec on/off (HCD3M)	yes	yes	yes	yes	yes
PCL low-pressure servo	yes	yes	yes	yes	yes
EHC electric servo	yes	yes	yes	yes	yes
Radiocontrol crane	yes	yes	yes	yes	yes
We reserve the right to make design alterations.					

Once Mowi - always Mowi



For over 30 years, Mowi has been involved with the manufacture of cranes and crane components.

At the beginning of the 1980s, we started to develop our own parallel cranes under the name Mowi. This was the start of a completely new generation of cranes unique in terms of both technology and design. Today the company is called FTG Cranes AB but the whole Mowi sentiment remains of course.

There is within the company a genuine knowledge of forestry which is reflected in our products. We don't only know how to build a forest trailer - we know how to use one as well. This provides unique knowledge which is used for the benefit of our customers.

Mowi products have become very well-known and in

demand through the years. "Once Mowi – always Mowi" is a well-known expression among our users. An important reason is product development based on our customers' wishes and needs carried out by our knowledgeable employees.

Some of our own characteristics simple manoeuvring, which means increased effectiveness, a unique movement pattern and durability despite a sleeker design. The cranes require a low oil flow but still have quick and precise movements.

Mowi equipment has a high trade-in value. Such characteristics make working in the forest a veritable pleasure.

There is a Mowi for every requirement. FTG Cranes AB manufacture and market a complete range of Mowi products like forest trailers, all equipped with Mowi cranes, special cranes

for wood chippers, for small and medium-sized forwarders and for harvesters.

The products are sold via leading private distributors in Sweden and exported through importers to a wide range of countries.

FTG Cranes AB is part of the BRUKS Group and is one of Europe's leading manufacturers of forest trailers, forest, timber and special cranes. They are manufactured at a state-of-the-art manufacturing facility in Bäckefors, Dalsland. Final assembly, design and product development take place in Vänersborg.



FTG Cranes AB | Blåstergatan 2, SE-462 73 Vänersborg, Sweden

Phone: +46 (0)521-26 26 30 | Fax: +46 (0)521-26 26 39

E-mail: info@ftgforest.com | www.ftgforest.com